

PUNCHING STRENGTH DECAY OF SLAB-COLUMN CONNECTIONS UNDER SEISMIC LOADING

J.A. TEGOS, ASSOC. PROFESSOR and A.G. TSONOS, LECTURER

Aristotle University of Thessaloniki, School of Engineering, Dept. of Civil Engineering
Division of Structural Engineering, P.O. Box 482, 540 06 Thessaloniki, Greece

ABSTRACT

An experimental investigation of the punching shear behavior of internal slab-column joints under seismic conditions is presented. Three large scale slab-column subassemblies were tested. The primary variable was the amount and the type of punching shear reinforcement. The enhanced ductility and energy dissipation capacity and the improved failure type was a result of the shear reinforcement.

KEYWORDS

Columns (supports); connections; cyclic loads; ductility; flat concrete plates; flat concrete slabs; punching shear; reinforced concrete; stiffness; strength.

INTRODUCTION

When concentrated axial loads act in small slab's regions it is possible to be observed early punching shear failure before slab develop its maximum flexural strength. Punching shear failure is a brittle sudden and catastrophic type of failure and is more dangerous than the other modes such as the flexural and the torsional type. This type of failure which is usually the source of collapse of flat plate and flat slab buildings, exhibits two main features, the vertical deflection and the truncated conic failure surface.

Flat slab buildings have many advantages such as : (1) simple and cheap form work, (2) easy placement of flexural reinforcement, (3) minimum obstruction to utility and duct placement, (4) minimal unusable space is created between stories, (5) capability of developing economical procedures of prestress with which the greater spans are faced. The last results in decreasing of the slab's depth and in aesthetically pleasing lines.

The only disadvantage of flat slab buildings is their vulnerability in earthquake loadings. Thus, during an earthquake and after a topic punching shear failure there is danger of taking place progressive collapse. The performance of flat slab structures subjected to seismic loading has attracted increasing attention recently (Morrison *et al.*, 1983; Moehle and Diebold, 1985; Robertson and Durrani, 1991, 1992). Considerable research has focused on the slab-column connections, culminating in the recently published recommendations by ACI-ASCE Committee 352 (1988). In this paper an effort is presented to improve the punching shear behavior of slab-column subassemblages during earthquake type loading.

TESTING PROGRAM

Specimens and variables

Three specimens were tested. The plate portion of each specimen was 120 mm thick and 1600 mm square; the column was 650 mm height and 200 mm square. The top and bottom reinforcement mats are shown in Fig. 1. Specimen L_1 had no shear reinforcement in the vicinity of the column, Specimen S_1 had 6 inclined 45 deg. bars with diameter 8 mm as slab shear reinforcement in the vicinity of the column Fig. 1(d) while in specimen F_1 steel fibres 50 mm in length were added to the concrete mix (30kg/m^3), in this region.

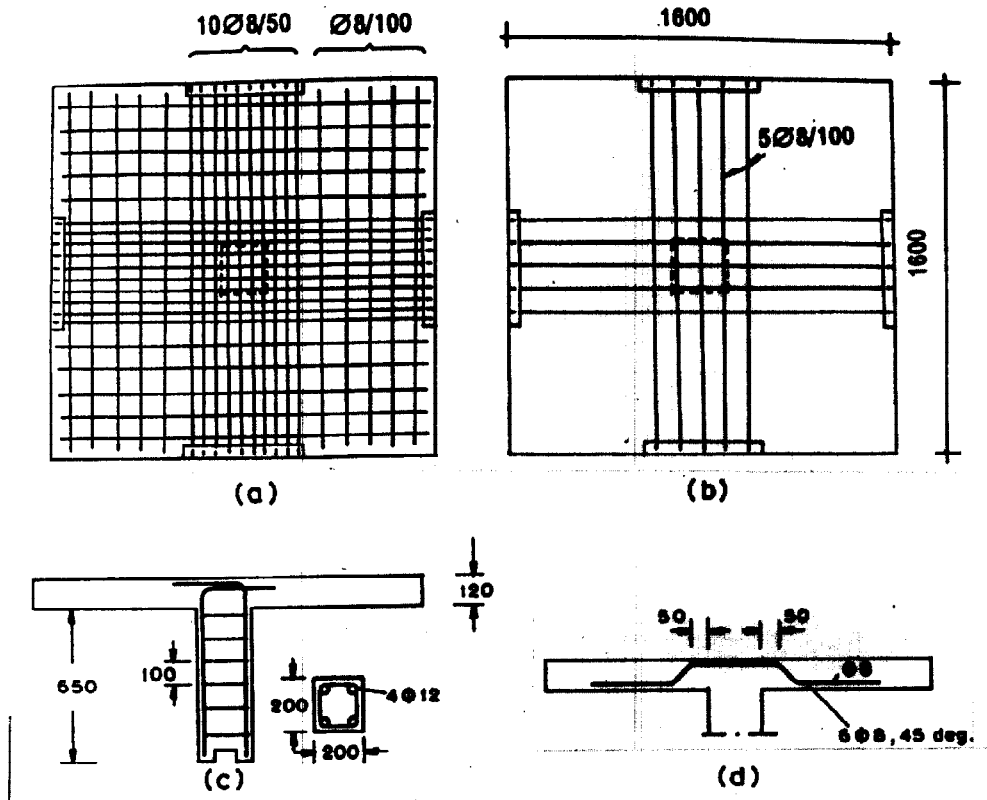


Fig. 1. (a)Top reinforcement mats of slab, (b)Bottom reinforcement mat of slab, (c)Reinforcing details of column and (d)Punching shear reinforcement of specimen S_1 (dimensions in mm)

Summary of specimens' steel yield stress, in MPa, bar size: $\varnothing 8=495$, $\varnothing 10=465$, $\varnothing 12=530$. The concrete mix had 28-day compressive strength of 25 MPa, 25 MPa, 27 MPa for specimens L_1 , S_1 and F_1 respectively.

The ultimate load of specimen L_1 is computed according to Greek Code (1995) as follows:

$$d = (d_x + d_y)/2 = 10 \text{ cm}$$

$$u = 4c + \pi d = 4 \cdot 20 + 3.14 \cdot 10 = 111 \text{ cm} = 1.11 \text{ m}$$

$$\rho = 0.5/10 \cdot 5 = 0.01 = \varnothing 8/5$$

$$v_{Rd1} = 1.6 \cdot \tau_{Rd} \cdot k \cdot (1+50\rho) \cdot d$$

$$v_{Rd1} = 1.6 \cdot 300 \cdot (1.6 - 0.1) \cdot (1+50 \cdot 0.01) \cdot 0.10 = 108 \text{ KN/m}$$

$$v_{Rd1} = u \cdot v_{Rd1} = 1.11 \cdot 108 = 120 \text{ KN}$$

Suggesting that $q \cong 0.25g$ (usual slabs' load), the column axial load in the case of seismic action is

$$N_{(\text{earthquake})} \cong 120 \frac{g+0.39}{1.35g+1.5q} \cong 75 \text{ KN}$$

TEST RESULTS

Plots of the applied load versus the displacement of the load point for all specimens are shown in Fig. 3. The ratio of the maximum load carried by the specimens during each cycle of loading to that of the first cycle is shown in Fig. 4(a). The peak-to-peak stiffness for all specimens is shown in Fig. 4(b). The load carrying capacity for specimen L_1 was sharply reduced after the first cycle of loading while the reduction in load carrying capacity for specimen F_1 was lower and for specimen S_1 was not as severe Fig. 4(a). The stiffness of all the subassemblies decreased rapidly as the specimens was subjected to successive cycles of increasing displacement. Nevertheless, the stiffness degradation of specimen S_1 was lower than those of the other specimens L_1 and F_1 (Fig. 4(b)).

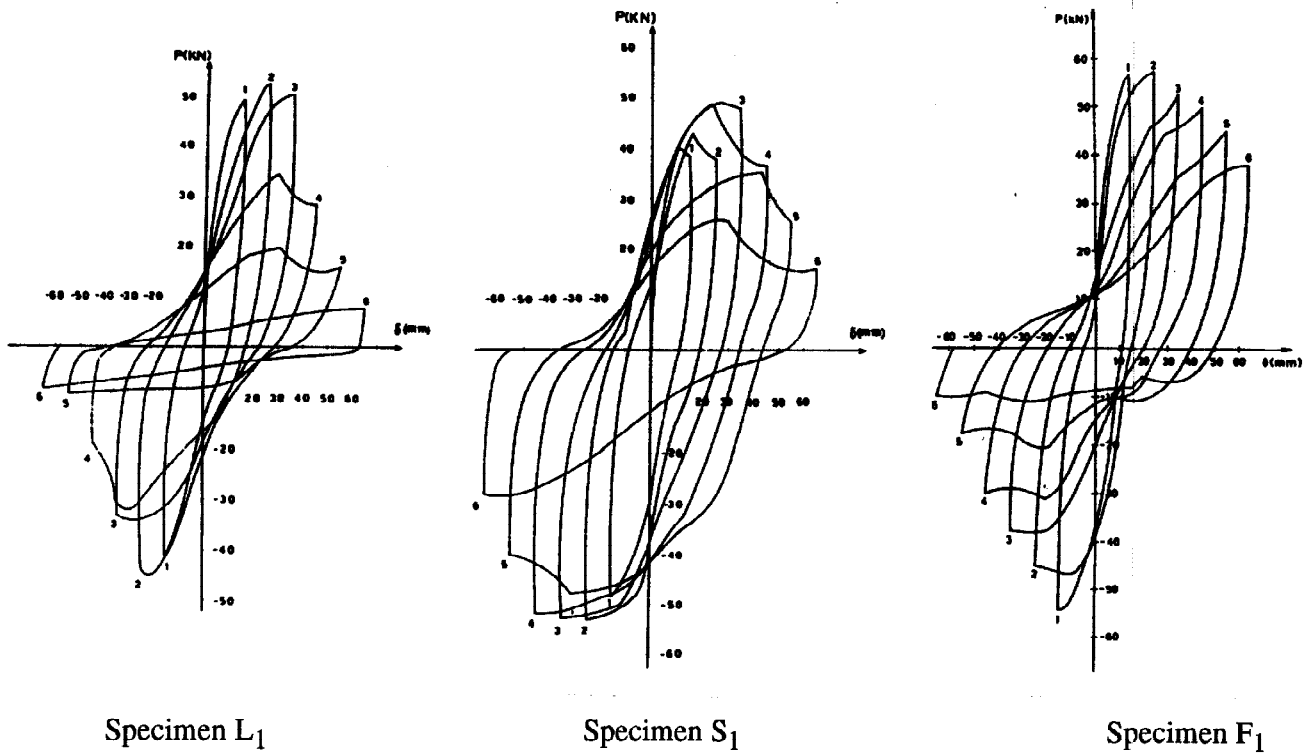


Fig. 3. Load versus deflection response for specimens L_1 , S_1 and F_1

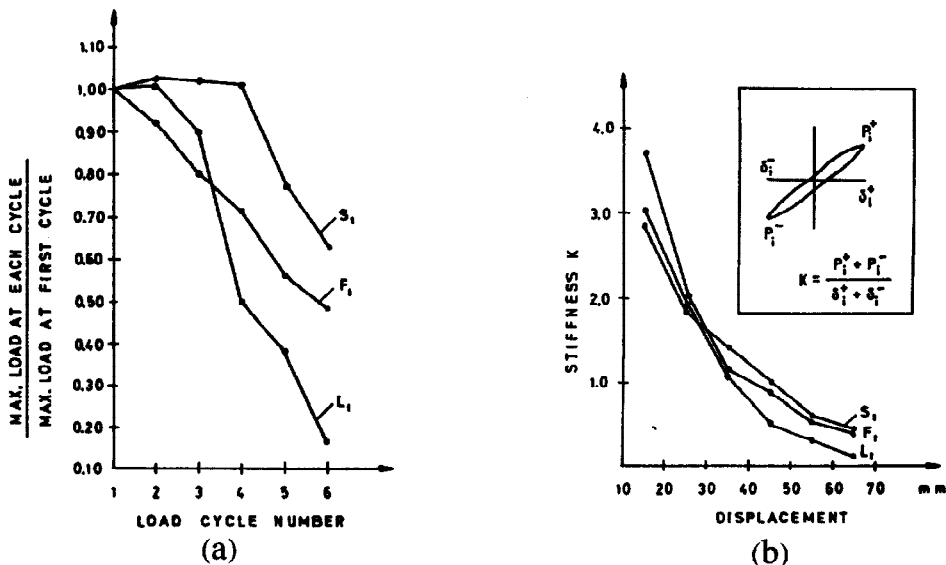


Fig. 4. (a) Cyclic load carrying capacity of specimens, (b) Connection stiffness-versus-displacement

CONCLUSIONS

Based on the test results described in this paper, the following conclusions were drawn.

1. The presence of punching shear reinforcement improves the seismic performance of slab-column subassemblages and reduces considerably the deterioration of the specimens after reaching their maximum capacity. This reinforcement resulted in changing of type of failure from punching shear failure, to almost flexural mode.
2. Slab-column connection with inclined 45 deg. bars as punching shear reinforcement performed considerably better than connection with steel fibres for increasing the shear capacity.
3. The inclined bars and the steel fibres increased the ductility and the energy dissipation capacity of the slab-column subassemblies.
4. A minimum shear reinforcement for the slab-column joints must be specified by the Codes for the design of earthquake resistant structures in order to avoid the brittle failure. The study reported here, is part of a larger experimental and analytical research program sponsored by the Laboratory of Reinforced Concrete Structures of Aristotle University of Thessaloniki. One of the purpose of this research is to explicit propose this minimum reinforcement percentage.

REFERENCES

- ACI-ASCE Committee 352 (1988). Recommendations for Design of Slab-Column Connections in Monolithic Reinforced Concrete Structures. *ACI Structural Journal*, Vol. **85**, No 6, pp. 675-696.
- Eurocode No 2 (1991). Design of concrete Structures, Part 1: General Rules and Rules for Buildings. *Commission of the European Communities*, Brussels, 167 pp.
- Greek Code for the Design and Construction of Reinforced Concrete Structures (1995). *Ministry of Environment, Land Planning and Public Works, General Secretariat of Public Works*, Athens, 159 pp.
- Moehle, J.P., and Diebold, J.W. (1985). Lateral Load Response of Flat-Plate Frame. *Journal of Structural Engineering, ASCE*, Vol. **111**, No 10, pp. 2149-2164.
- Morrison, D.G.; Hirasawa, I.; and Sozen, M.A. (1983). Lateral-Load Tests of R/C Slab-Column Connections. *Journal of Structural Engineering, ASCE*, Vol. **109**, No 11, pp. 2698-2714.
- Robertson, I.N., and Durrani, A.J. (1991). Gravity Load Effect on Seismic Behavior of Exterior Slab-Column Connections. *ACI Structural Journal*, Vol. **88**, No 3, pp. 255-267.
- Robertson, I.N., and Durrani, A.J. (1992). Gravity Load Effect on Seismic Behavior of Interior Slab-Column Connections. *ACI Structural Journal*, Vol. **89**, No 1, pp. 37-45.
- Scott, D.B.A. and Sidney, H.S. (1992). Punching Shear Tests of Concrete Slab-Column Joints Containing Fiber Reinforcement. *ACI Structural Journal*, Vol. **89**, No 4, pp. 425-432.