

Dynamic response of rigid bodies subjected to horizontal base motions

M. Demosthenous & G.C. Manos

Department of Civil Engineering, Aristotle University of Thessaloniki, Greece

ABSTRACT: The dynamic response of three specific geometric shapes of bodies practically non-deformable assumed to resemble components of ancient monuments is presented and discussed in this paper. They are subjected to sinusoidal or simulated earthquake base motions reproduced by the Earthquake Simulator Facility, Aristotle University. For each of the three examined shapes, two distinct configurations of the same geometry are studied, one with solid bodies and the second with sliced bodies. The stability of this type of solid body configurations to various base motions is presented and discussed.

1. INTRODUCTION

Ancient Greek and Roman type structures composed of large heavy members that simply lie on top of each other in a perfect fit construction without the use of connecting mortar type materials are distinctly different from relatively flexible contemporary structures (figure 1). The seismic response mechanisms that develop on this solid-block structural system during strong ground motions can include sliding and rocking, thus dissipating the seismic energy in a different way from that of conventional contemporary buildings. The seismic behaviour of this type of structure (ancient Greek and Roman monuments) or of their components can be investigated by studying the earthquake response of solid or sliced rigid bodies during simulated base motions.

The present study deals with the dynamic response of three different geometries of solid or sliced rigid-block type bodies (figure 2), which are assumed to represent models of prototype structures 20 times larger. Two basic categories of practically non-deformable bodies were studied. The first one deals with whole solid bodies of certain geometry whereas the second category includes non-deformable bodies of the same geometry but this time these bodies are formed with slices that lie on top of each other without any connection. The tests performed include sinusoidal sweep tests within a chosen range of frequencies and amplitude as well as earthquake simulated tests using the El Centro 1940 record as will be explained below.

The behaviour of solid-block structures supported on either rigid or flexible foundation, when subjected to earthquake ground motions, has been researched for quite sometime. Housner (1963) investigated the dynamics of a solid blocks on a rigid base, Aslam et.al. (1980) investigated the sliding and rocking response of solid rectangular concrete block on the earthquake simulator facility of the University of California at Berkeley, Priestley

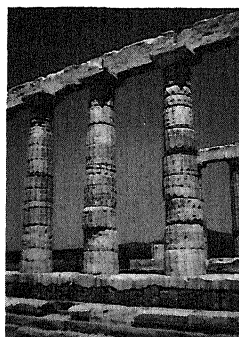


Figure 1. Ancient sanctuary

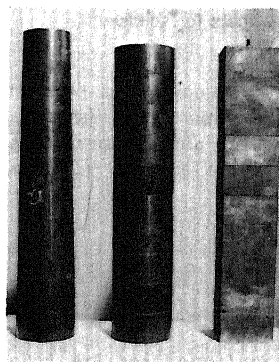


Figure 2. Rigid specimens

et.al. (1978) has dealt with the problem in a way that also included experiments with a shaking table. Yim et.al. (1984), Spanos et.al. (1984), Oppenheim et.al. (1986) and

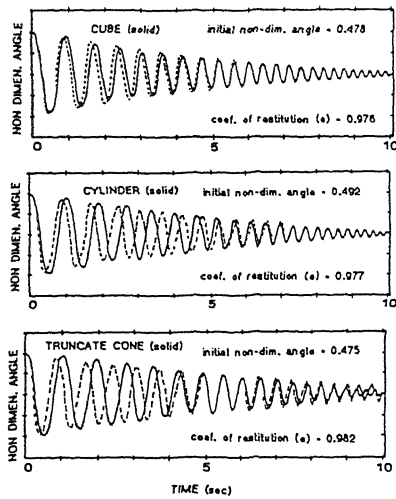


Figure 3. Free vibration response

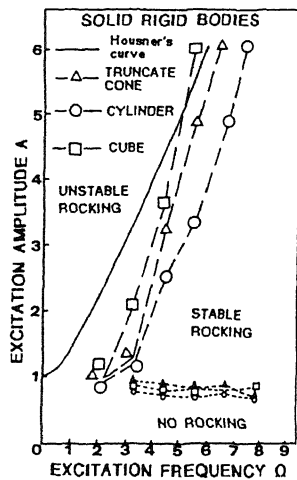


Figure 4. Summary of sinusoidal tests for solids

Koh (1990) have also been investigating this problem treating it with various analytical approaches. Ishiyama has also studied this problem and among other things gives a comprehensive survey of the rigid-block research (1980).

2. BEHAVIOR OF SOLID BODIES

2.1 Preliminary free vibration test

Free vibration tests were performed for the solid specimens with the aim of assessing the coefficient of restitution of the test structures. Figures 3a, 3b and 3c depict with a solid line the rocking angle response for each specimen. Superimposed on each graph is a dashed line curve that corresponds to a predicted rocking response with a coefficient of restitution that

gave the best fit to the experimental measurements.

The predicted rocking response was derived from the linearised equations of motion (Aslam et al. 1980).

Whereas there is good correlation between predicted and observed rocking response for the prismatic specimen certain discrepancies are apparent at the initial large amplitude rocking stages for the cylindrical and conic specimens. As was also stated by Koh (1990) this must be attributed to 3-D rocking, since rocking in a perfect plane for a 3-D model requires exacting initial conditions and the slightest out of plane disturbance will cause rocking to be three dimensional.

2.2 Sinusoidal tests for the solid specimens

During these tests the frequency of motion was varied from 1Hz to 7Hz, in steps of 1Hz. This resulted in groups of tests with constant frequency for the horizontal sinusoidal motion for each test. In the various tests belonging to the same group of constant frequency, the amplitude of the excitation was varied progressively from test to test. The above stages are graphically portrayed in the plot of figure 4. The ordinates in this plot represent the non-dimensional amplitude of the base motion whereas the abscissae represent the non-dimensional frequency given by the following formulae :

$$A = x / (\theta * g), \quad \Omega = \omega / p$$

$$p^2 = W R_c / I_o \quad (1)$$

A = The non-dimensional base acceleration amplitude .

x = The actual horizontal peak acceleration of the sinusoidal motion.

θ = The critical angle that indicates overturning of the specimen (rads).

g = The gravitational acceleration

Ω = the non-dimensional frequency

ω = The actual sinusoidal frequency (Hz).

p = The natural rocking frequency of the specimen (Hz).

W = The weight of the Block

Rc = The distance of the center of gravity from the pole of rocking

I_o = The mass moment of inertia of the block with respect to the pole of rocking

The dotted lines in this plot represent the stage where rocking was initiated for the first time during the tests whereas the dashed lines represent the state of overturning of the specimen during the experimental sequence. The same figure depicts with a solid line the stable-unstable boundary of a solid block with properties the same as the ones used in the experiments, as predicted by Housner (1963), when this specimen is subjected to one half-cycle sine-wave. The following observations summarise the main points:

-For all specimens the initiation of rocking occurs for

non-dimensional amplitude (A) almost equal to 1.0 for all examined frequencies.

-The non-dimensional unstable rocking amplitude. *increases rapidly with the non-dimensional frequency*, which indicates greater stability of the solid blocks for higher frequencies.

-For small values of the non-dimensional frequency the transition range in terms of non-dimensional amplitude from no-rocking to overturning is very small and it occurs with a minor amplitude increase.

-The behaviour predicted by Housner (1963) overestimates the stability for all the used specimens, especially for small non-dimensional frequencies.

A further numerical analysis has been performed, aimed to simulate the dynamic response of the solid prism used in the experiments (cube), using the non-dimensional linear equations for sinusoidal excitation, as given by Spanos (1984), and the coefficient of restitution, as evaluated from the free vibration tests. This analysis has been performed for various combinations of amplitude and frequency. Figure 5 presents these results in a summary form and as can be seen they exhibit fairly good agreement with the corresponding experimental measurements.

2.3 Simulated earthquake test for the solid specimens

A number of tests were performed, based on the 1940 El Centro earthquake record, with progressively increasing intensity. The base acceleration and displacement response was measured together with the rocking response of each specimen. The principal objective of these tests was to observe again the stable-unstable behaviour of the studied specimens, as shown in figure 6. The following points summarise the most important findings:

-During small intensity tests the solid blocks developed either slight rocking or no-rocking at all. In this case the maximum rocking angle is less than 30% of the critical angle.

-For peak base displacement between 10mm and 16.25mm the maximum rocking angle becomes approximately 60% of the critical.

-There was no considerable difference in the intensity of base motion during which all three specimens overturned.

A series of simulated earthquake tests similar to the ones performed for the solid specimens was also carried out for the sliced specimens, that are not included here due to space limitations.

3. BEHAVIOR OF SLICED SPECIMENS

3.1 Sinusoidal tests with the sliced specimens

This sequence included similar tests with the ones

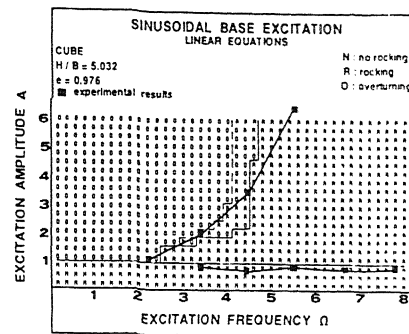


Figure 5. Summary from numerical analysis

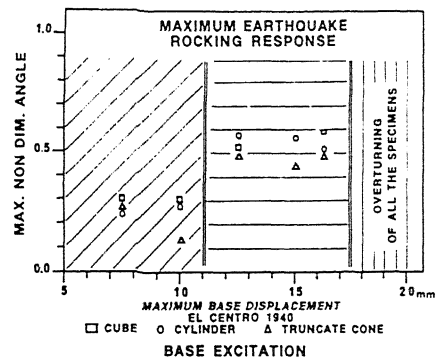


Figure 6. Maximum earthquake rocking response

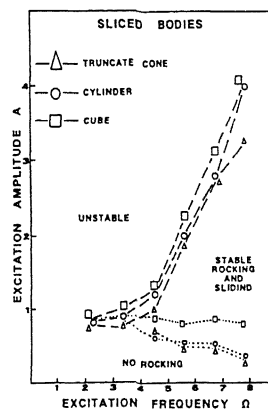


Figure 7. Summary of sinusoidal tests for sliced bodies

performed for the solid specimens in order to assess the stable non-stable boundaries by studying the response with varying frequency and amplitude of the base motion. One important observation this time is that the response of all the sliced specimens for large amplitude excitations involved sliding as well as rocking in more than one slice contact-level. The overturning this time was caused by large sliding as well as rocking displacements. The measured stable-unstable boundary is depicted in figure 7

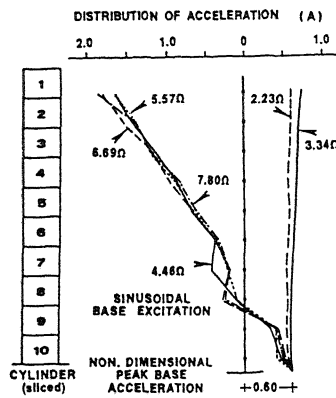


Figure 8. Acceleration response of sliced bodies with constant base acceleration

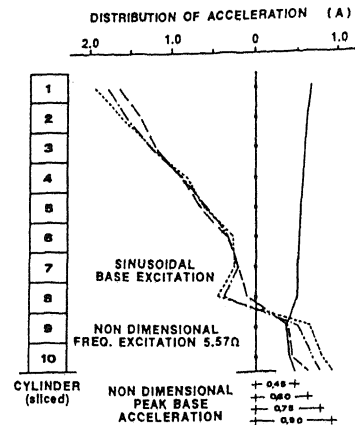


Figure 9. Acceleration response of sliced bodies with constant base motion frequency

in terms of the same non-dimensional amplitude and frequency parameters that were used before and are based on the corresponding solid specimens as was already explained (Eq. 1). The following points can be made:

-From the comparison of the stable unstable boundary between the solid and the sliced specimens of the same geometry (Figs. 4 and 7) it can be seen that all sliced specimens appear to be more unstable than the corresponding solid specimens.

-Because the sliding displacements are coupled this time with the rocking displacements the overturning or the sliding failure is also dependent on the maximum value of the relative sliding displacement that develops at its slice level as compared with the critical value that it can be allowed from the geometry of the specimen at the same level.

3.2 Acceleration response of the sliced specimens

In order to further investigate the response of the sliced specimens during the sinusoidal base motions the following tests were performed; the results are presented below in non-dimensional form.

a) The first group of tests includes base motions where the non dimensional peak base acceleration was kept constant equal to 0.6 while the non-dimensional frequency was varied from 2.2 to 7.8 with steps of 1.117 for each test. For the cylindrical specimen the measured response for this series of tests is plotted in figure 8. The following points summarize the most important findings:

-For low non-dimensional frequency values the acceleration response of all the slices was in phase with that of the base motion and with the same amplitude, thus signifying no-rocking.

-For high non-dimensional frequency values, where sliding and rocking develops at many slices along the height, the acceleration response at the various slices is out of phase with that of the base and with amplified peak acceleration values as compared with the base acceleration response. The distribution of the peak

acceleration along the height of the specimen changes significantly from that corresponding to low frequency values, thus reflecting the sliding and rocking response mechanisms that develop at the various contact surfaces.

b) The second group of tests included base motions where the non-dimensional excitation frequency was kept constant equal to 5.57 while, for the four tests performed for each specimen, the non-dimensional peak base acceleration took the values 0.45, 0.60, 0.75, 0.90 respectively. For the cylindrical specimen the measured response for this series of tests is plotted in figure 9. The following summarise the most important points:

-For relatively low values of peak base acceleration the slices of all the specimens responded in phase with that of the base motion. A no-rocking stage is indicated from the distribution of the acceleration response along the height.

-For relatively high non-dimensional values of the peak base acceleration the distribution of the peak acceleration changes thus reflecting the sliding and the rocking response mechanisms involving more than one of the slices.

4. CONCLUSIONS

1. The coefficient of restitution can be defined with sufficient accuracy from the free vibration test results in combination with the performed numerical analysis, despite complications from the three dimensional rocking.

2. Similar stability behavior was observed for the three solid specimens of different geometry, as was assessed from the sinusoidal and the simulated earthquakes tests.

3. The numerically predicted upper-bounds for the stable-unstable rocking of the solid prismatic specimen, subjected to sinusoidal base motions, agrees well with the observed behaviour.

4. The stability of the sliced specimens during sinusoidal tests appears to be inferior to that of the solid specimens and it involves both sliding as well as rocking at various levels.

5. All solid as well as all sliced specimens responded out-of-plane of the excitation axis during large in-plane rocking and sliding amplitudes; naturally, this was more pronounced for the cylinder and the truncate cone specimens.

REFERENCES

1. M. Aslam, W. G. Godden and D. Theodore, 1980, "Earthquake Rocking Response of Rigid Bodies", J. Struct. Div. ASCE, pp. 337-392. .
2. G. W., Housner, 1963, "The Behaviour of Invented Pendulum Structures During Earthquakes", Bulletin of the Seismological Society of America, Vol. 53, No. 2.
3. Yuji Ishiyama, 1980, "Review and Discussion on Overturning of Bodies by Earthquake Motions", BRI Research Paper No. 85, Building Research Institute, Ministry of Construction.
4. G. C. Manos, M. Demosthenous, 1990, "The behaviour of solid or sliced rigid bodies when subjected to horizontal base motions", Proc. of Fourth National Conf. on Earthquake Engineering, Palm Springs, California, Vol. 3, pp. 41-50.
5. I. J. Oppenheim, I. J. Bielak, R. H. Allen, A. R. Parkev, 1986, "Dynamics of Multistory Rigid Prism Assemblies", Project Report, Department of Civil Engineering, University of Carnegie Mellon, Pittsburg.
6. M. J. N. Priestley, R. J. Evison, A. J. Carr, 1978, "Seismic Response of Structures Free to Rock on their Foundations", Bulletin of the New Zealand National Society for Earthquake Engineering, Vol. 11, No. 3.
7. Pol. D. Spanos, Aik-Siong Koh, 1984, "Rocking of Rigid Blocks Due to Harmonic Shaking", Journal of Mechanics Division, ASCE, Vol. 110, No' EM11, pp. 1627-1642.
8. S. C. S. Yim and A. K. Chopra, 1984, "Dynamics of Structures on Two-Spring Foundation Allowed to Uplift" Journal of the Engineering Mechanics Division, ASCE, Vol. 10, No. EM7, pp. 1124-1146.
9. Aik-Siong Koh and G. Mustafa, 1990 "Free Rocking of Cylindrical Structures" Journal of Eng. Mechanics, Vol. 116, No. 1.