

Important Dates:

1. Full paper submission: 08th September, 2025
2. Paper acceptance: 22nd September, 2025
3. Registration: 6th October, 2025

Workshop Schedule:

- 6th November, 2025: Inauguration Ceremony (Evening).
7th – 8th November, 2025: Poster and Paper Presentation.

Paper Submission:

Paper should not be more than 4 pages.

For details about poster and paper submission guidelines:

<http://www.iitk.ac.in/civil/geotech/igc.html>

Registration:

Registration fees for the workshop are:

1. Student: 1500 INR
2. Faculty: 4000 INR

Contact Information:

Website: <http://www.iitk.ac.in/civil/geotech/igc.html>

E-mail: igskanpurchapter@gmail.com

Telephone: (91-512) 259 7623 (Organizing Chairman)

Telephone: (91-512) 259 6978 (Organizing Secretary)

Organizing Committee:

- Prof. N. R. Patra (Organizing Chairman)
Prof. Arghya Das (Organizing Secretary)
Prof. Jagdish Prasad Sahoo (Organizing Secretary)
Prof. Priyanka Ghosh
Prof. Rajesh Sathiyamoorthy
Prof. Prishati Raychowdhury
Prof. Gaurav Tiwari
Prof. Bipin Kumar Gupta

Student Members:

- Mr. Sanjay Kamal
Mr. Mohd Sameer Alam

Advisory Committee:

- Dr. Anil Joseph, President IGS
Dr. A.P. Singh, Hon. Secretary, IGS
Prof. J.T. Shahu, IITD
Prof. D Choudhury, Editor-in-Chief IGJ, IITB
Prof. Sarvesh Chandra, IITK
Prof. MR Madhav, IITK
Prof. PK Basudhar, IITK
Prof. DN Singh, IITB
Prof. Madhavi Latha G, IISc
Prof. N Samadhiya, IITR
Prof. DK Baidya, IITKGP
Prof. A Prasad, IITBHU
Prof. A Prashant, IITGn
Prof. Kavita Tandon, HBTU
Prof. Dipteeek Parmar, HBTU

Workshop Themes:

With growing challenges in geotechnical engineering, advanced numerical modelling is vital for accurate analysis and effective decision-making. This workshop brings together leading national and international experts to share recent advancements and explore future directions in geotechnical modelling.

1. Fundamentals of Numerical Methods in Geomechanics
2. Coupled Thermo-Hydro-Mechanical Modelling
3. Constitutive Modelling of Soils and Rocks
4. Probabilistic and Stochastic Approaches in Geotechnical Modelling
5. Numerical Modelling for Ground Improvement Techniques
6. Applications in Earthquake and Dynamic Analysis

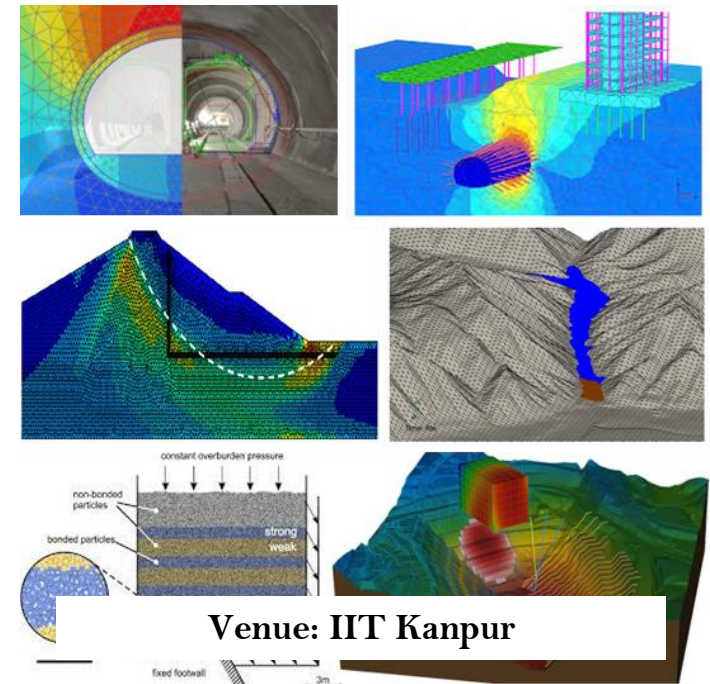
Indian Institute of Technology Kanpur & IGS Kanpur Local Chapter International Workshop on Advanced Numerical Modelling for Geotechnical Engineering

6th – 8th November 2025

International Guest Speaker:

Professor John. S McCartney (UCSan Diego)

Professor Ha H. Bui (Monash University)



Venue: IIT Kanpur



Indian Geotechnical Society (established in the year 1948)

The Indian Geotechnical Society (IGS), founded in 1948, is dedicated to advancing knowledge and practice in geotechnical engineering, including soil mechanics, foundation engineering, rock mechanics, and related fields. As a member of ISSMGE, it promotes collaboration among engineers, researchers, and institutions through conferences, publications, and technical programs. With over 5,500 members and 50+ local chapters, IGS fosters innovation and professional development across India.

IGS- Kanpur Chapter

The IGS Kanpur Chapter, hosted at IIT Kanpur, is one of the oldest local chapters of the Indian Geotechnical Society. It promotes geotechnical awareness through technical lectures, workshops, and student engagement. The chapter serves as a regional hub for collaboration among professionals, researchers, and students in geotechnical engineering and allied disciplines in Uttar Pradesh and nearby regions.

Indian Institute of Technology Kanpur (established in the year 1959)

From its very inception, IIT Kanpur has been striving to develop itself into an institution of excellence in education and research in consonance with the contemporary and future needs of India. The institute attracts top faculty and students nationwide and globally, fostering a vibrant ecosystem of learning, research, and industry collaboration on its state-of-the-art residential campus.

Civil Engineering - IITK (established in the year 1961)

The Department of Civil Engineering at IIT Kanpur, established in 1961, has been a consistent source of high-quality technical workforce for industry, research organizations, and academia. It offers B.Tech., B.Tech.–M.Tech. Dual Degree, M.Tech. and PhD programs in all the major specializations in Civil Engineering. The department emphasizes strong fundamentals, innovation, and interdisciplinary problem-solving. Faculty engage in advanced research and consultancy, aiming for global recognition and continued leadership in civil engineering education and research.

Geotechnical Engineering -IITK (established in year 1980)

The Geotechnical Engineering Division at IIT Kanpur, established in 1980, is known for its excellence in education, research, and consultancy. It offers M.Tech and Ph.D. programs focused on foundation engineering, earthquake geotechnics, ground improvement, rock mechanics, geo-environmental engineering and constitutive modelling. The division boasts state-of-the-art laboratory facilities, field testing instruments, and model testing setups. Students and researchers also utilize cutting-edge numerical modelling tools. The faculty are actively engaged in interdisciplinary research and handle sponsored consultancy projects from both national and international agencies.

Getting to IITK

IIT Kanpur is located about 16 km west of Kanpur city, along the Grand Trunk Road near Kalyanpur. The institute is well connected by air, train, and road, making it accessible from all major cities across India.

By Air:

The nearest airport is Chaudhary Charan Singh International Airport, Lucknow (approx. 80 km). It is well connected to major cities. The drive from Lucknow Airport to IIT Kanpur takes approximately 2 to 3 hours. Taxis and app-based cab services are readily available at the airport. Kanpur Airport is closer to the campus but has very limited domestic flights.

By Train:

Kanpur Central Railway Station (station code: CNB) is a major rail hub on the Delhi–Howrah and Delhi–Mumbai routes. It is approximately 16 km from the campus, and taxis, auto-rickshaws, and app-based cab services are easily available. The journey to the campus takes around 40 minutes.

By Road:

Kanpur is well connected by a network of national highways, making road travel convenient from several major cities. It lies on National Highway 19 (formerly NH 2), part of the historic Grand Trunk Road linking Delhi and Kolkata. The city is also connected to Lucknow (90 km) via NH 27 (formerly NH 25) and to Delhi (440 km) via NH 91 through Ghaziabad and Aligarh. Other important routes connect Kanpur to Agra, Varanasi, and Prayagraj.