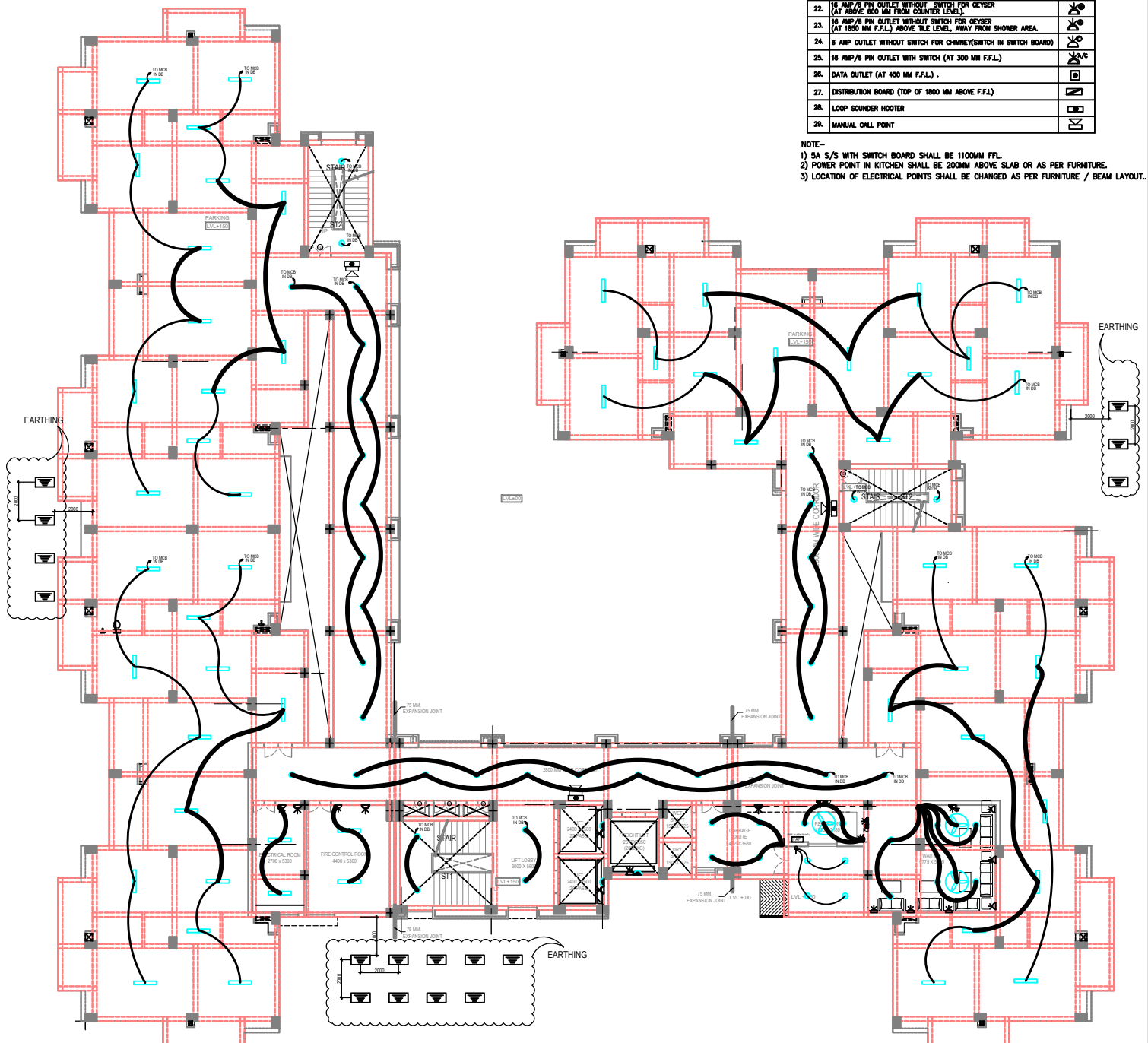


**LEGEND**

S.NO	DESCRIPTION	SYMBOL
1.	6 AMP. ONE-WAY SWITCH WITH REGULATOR (AT 1100 MM F.F.L.)	⏻
2.	16 AMP. ONE-WAY SWITCH FOR GEYSER (AT 1100 MM F.F.L.)	⏻
3.	16 AMP. ONE-WAY SWITCH FOR GEYSER IN KITCHEN (ABOVE COUNTER)	⏻
4.	6 AMP. ONE-WAY SWITCH FOR AQUAGUARD (ABOVE COUNTER)	⏻
5.	1 X 20 WATT LED TUBE LIGHT (CEILING MOUNTED)	☐
6.	20W LED TUBE LIGHT (WALL MOUNTED) (2150MM(minimum) FROM F.F.L.)	⬅
7.	150W LED LIGHT (CEILING MOUNTED)	⊕
8.	1x12W LED LIGHT (CEILING MOUNTED)	⊕
9.	BRACKET LIGHT (WALL MOUNTED) (2150MM(minimum) FROM F.F.L.)	⊕
10.	CEILING FAN	⊕
11.	BULK HEAD LIGHT (AT 2200 MM F.F.L.)	⊕
12.	EXHAUST FAN	⊕
13.	CALL BELL PUSH (AT 1100 MM F.F.L.)	⊕
14.	CALL BELL BUZZER (AT 2150 MM F.F.L.)	⊕
15.	CEILING ROSE (AT 2150 MM F.F.L.)	⊕
16.	6 AMP. OUTLET WITH SWITCH (AT 450 MM F.F.L.) (ABOVE SKIRT LEVEL)	⊕
17.	2NO. 6 AMP. OUTLET WITH SWITCH FOR TV (AT 450 MM F.F.L.)	⊕
18.	16 AMP/8 PIN OUTLET WITH SWITCH (AT 300 MM F.F.L.)	⊕
19.	6 AMP. OUTLET WITHOUT SWITCH FOR AQUAGUARD (BELOW COUNTER LEVEL)	⊕
20.	TV OUTLET (AT 450 MM F.F.L.) (ABOVE SKIRT LEVEL)	⊕
21.	TELEPHONE OUTLET (AT 450 MM F.F.L.) (ABOVE SKIRT LEVEL)	⊕
22.	16 AMP/8 PIN OUTLET WITHOUT SWITCH FOR GEYSER (AT ABOVE 800 MM FROM COUNTER LEVEL)	⊕
23.	16 AMP/8 PIN OUTLET WITHOUT SWITCH FOR GEYSER (AT 1100 MM F.F.L.) ABOVE TILE LEVEL, AWAY FROM SHOWER AREA.	⊕
24.	6 AMP OUTLET WITHOUT SWITCH FOR CHIMNEY(SWITCH IN SWITCH BOARD)	⊕
25.	16 AMP/8 PIN OUTLET WITH SWITCH (AT 300 MM F.F.L.)	⊕
26.	DATA OUTLET (AT 450 MM F.F.L.)	⊕
27.	DISTRIBUTION BOARD (TOP OF 1800 MM ABOVE F.F.L.)	⊕
28.	LOOP SOUNDER HOOPER	⊕
29.	MANUAL CALL POINT	⊕

**NOTE-**

- 1) 5A S/S WITH SWITCH BOARD SHALL BE 1100MM FFL.
- 2) POWER POINT IN KITCHEN SHALL BE 200MM ABOVE SLAB OR AS PER FURNITURE.
- 3) LOCATION OF ELECTRICAL POINTS SHALL BE CHANGED AS PER FURNITURE / BEAM LAYOUT.



PROJECT:  
**PROPOSED TYPE-III HOUSING AT I.I.T. KANPUR**

NOTES:  
1- ALL DIMENSIONS IN MILLIMETER UNLESS OTHERWISE SPECIFIED.  
2- FIGURE DIMENSIONS SHALL BE FOLLOWED.  
3- ALL DIMENSIONS SHALL BE CHECKED & VERIFIED BEFORE COMMENCEMENT OF THE WORK.  
4- DISCREPANCY, IF ANY, SHALL BE BROUGHT TO THE NOTICE OF ARCHITECT IN-CHARGE AND CLARIFICATION OBTAINED IN WRITING PRIOR TO EXECUTION OF THE WORK.

DRG. TITLE:  
**ELECTRICAL LAYOUT PLAN STILT FLOOR**

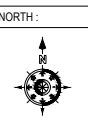
BUILDING:  
**BLOCK-02**

CLIENT:  
**I.I.T. KANPUR**

DRAWING STATUS :  
**TENDER DRAWING**

DATE:  
**APRIL -2019**

DRG. NO. :  
**AED/IIT/WD/BLOCK-02/EL-01**



CONSULTING ARCHITECTS:

**ARCH-EN DESIGN**  
ARCHITECTS

UNITS: 40, SURAJ KANUNJIBAG, KANPUR  
201 002, KANPUR  
CONTACT: 9452022222, 9452022222

