

STATISTICAL REPORT
OF
GRADES AWARDED
2010-11/II



SEPTEMBER-2011

Office of the Dean of Academic Affairs
Indian Institute of Technology Kanpur

LIST OF CONTENTS

S.NO	CONTENTS	PageNo
1.	Figure: Distribution of all grades awarded to UG and PG students across the institute.	1
2.	Figure: Distribution of all grades awarded to UG students	1
3.	Figure: Distribution of all Core courses grades awarded to UG students	2
4.	Figure: Distribution of all grades awarded to PG students	2
5.	Figure: Distribution of all grades awarded to PG students	3
6.	Figure: Distribution of all grades awarded to PG students	4
7.	Figure 6: AE department distribution of grades awarded to UG students	5
8.	Figure 7: BSBE department distribution of grades awarded to UG students	5
9.	Figure 8: CE department distribution of grades awarded to UG students	6
10.	Figure 9: CHE department distribution of grades awarded to UG students,	6
11.	Figure 10: CHM department distribution of grades awarded to UG students	7
12.	Figure 11: CSE department distribution of grades awarded to UG students	7
13.	Figure 12: EE department distribution of grades awarded to UG students	8
14.	Figure 13: HSS department distribution of grades awarded to UG students	8
15.	Figure 14: IME department distribution of grades awarded to UG students	9
16.	Figure 15: Design department distribution of grades awarded to UG students	9
17.	Figure 16: ME department distribution of grades awarded to UG students	10
18.	Figure 17: MSE department distribution of grades awarded to UG students	10
19.	Figure 18: MTH department distribution of grades awarded to UG students	11
20.	Figure 19: PHY department distribution of grades awarded to UG students	11
21.	Figure 20: AE department distribution of grades awarded to PG students	12
22.	Figure 21: BSBE department distribution of grades awarded to PG students	12
23.	Figure 22: CE department distribution of grades awarded to PG students	13
24.	Figure 23: CHE department distribution of grades awarded to PG students	13
25.	Figure 24: CHM department distribution of grades awarded to PG students	14
26.	Figure 25: CSE department distribution of grades awarded to PG students	14
27.	Figure 26: EE department distribution of grades awarded to PG students	15
28.	Figure 27: HSS department distribution of grades awarded to PG students	15
29.	Figure 28: IME department distribution of grades awarded to PG students	16
30.	Figure 29: Design department distribution of grades awarded to PG students	16
31.	Figure 30: ME department distribution of grades awarded to PG students	17
32.	Figure 31: MSE department distribution of grades awarded to PG students	17
33.	Figure 32: MTH department distribution of grades awarded to PG students	17
34.	Figure: PHY department distribution of grades awarded to PG students	18

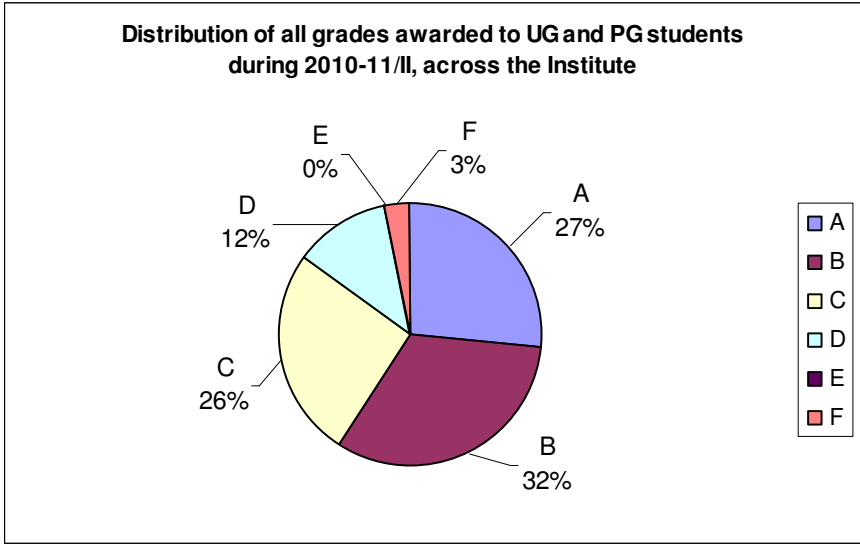


Figure 1

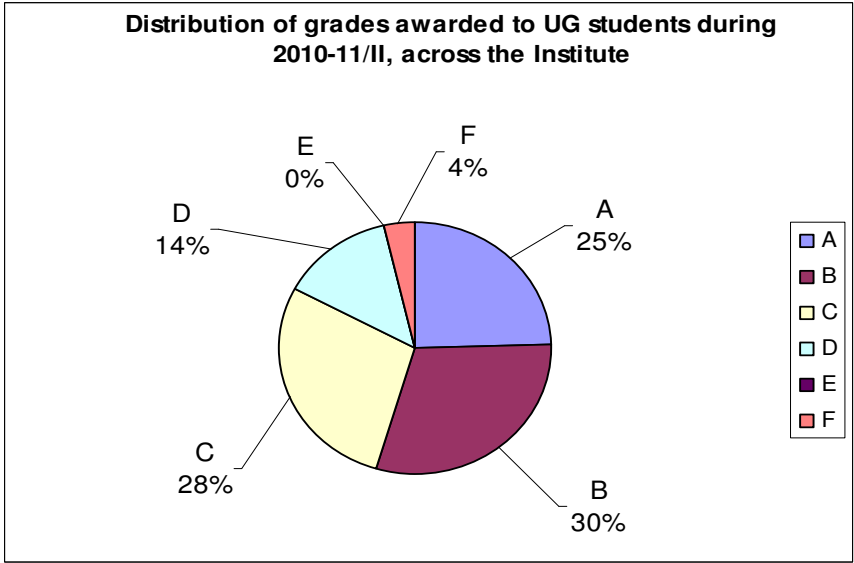


Figure 2 (UG students) include all students who have a 5 digit roll number (All B.Tech, Msc-2yr, BT part of BT-MT)

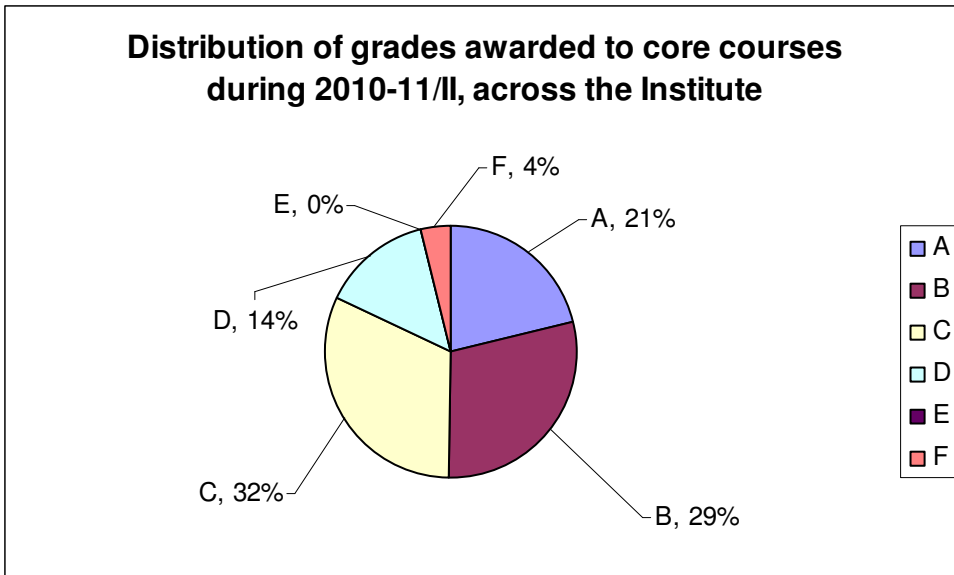


Figure 2 a: Data is for Core course numbers: ESO202, ESO218, TA101N, ESO212, CHM101N, CHM201R, ESC101N, ESC102N, ESO210, ART102, ART105, ECO201, ENG124, PHI141, PSY151, SOC171, ESO204, TA201N, ESO214, ESO209, MTH101R, MTH101S, MTH102N, MTH203R, PHY101N, PHY102N, PHY102S, PHY103N,

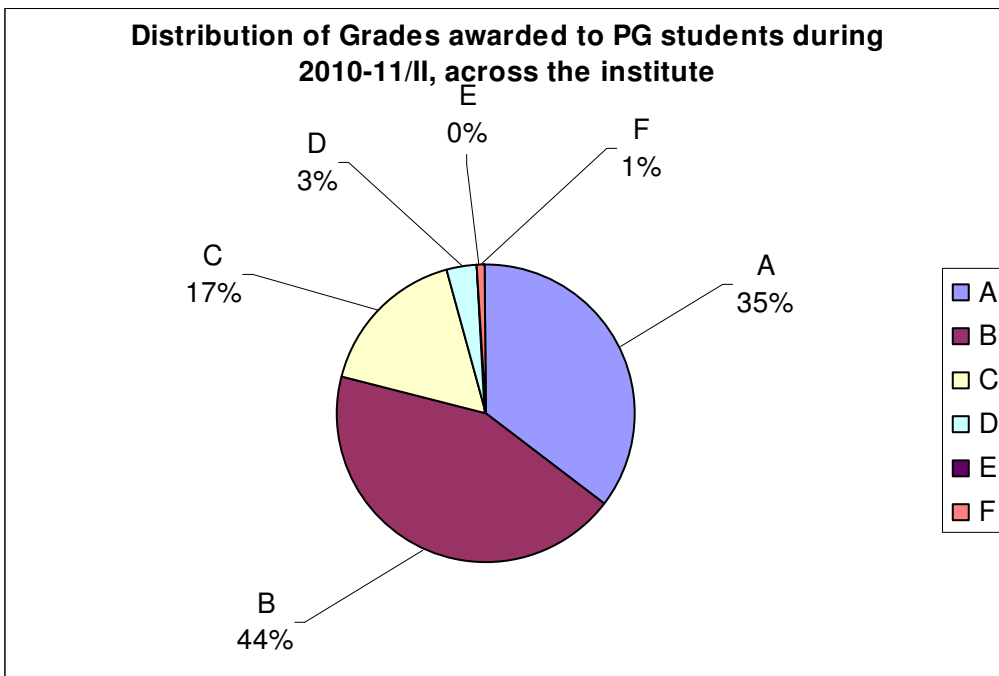


Figure 3: PG students include all students (All M.Tech, MT part of BT-MT, PhD, MBA, M.Des

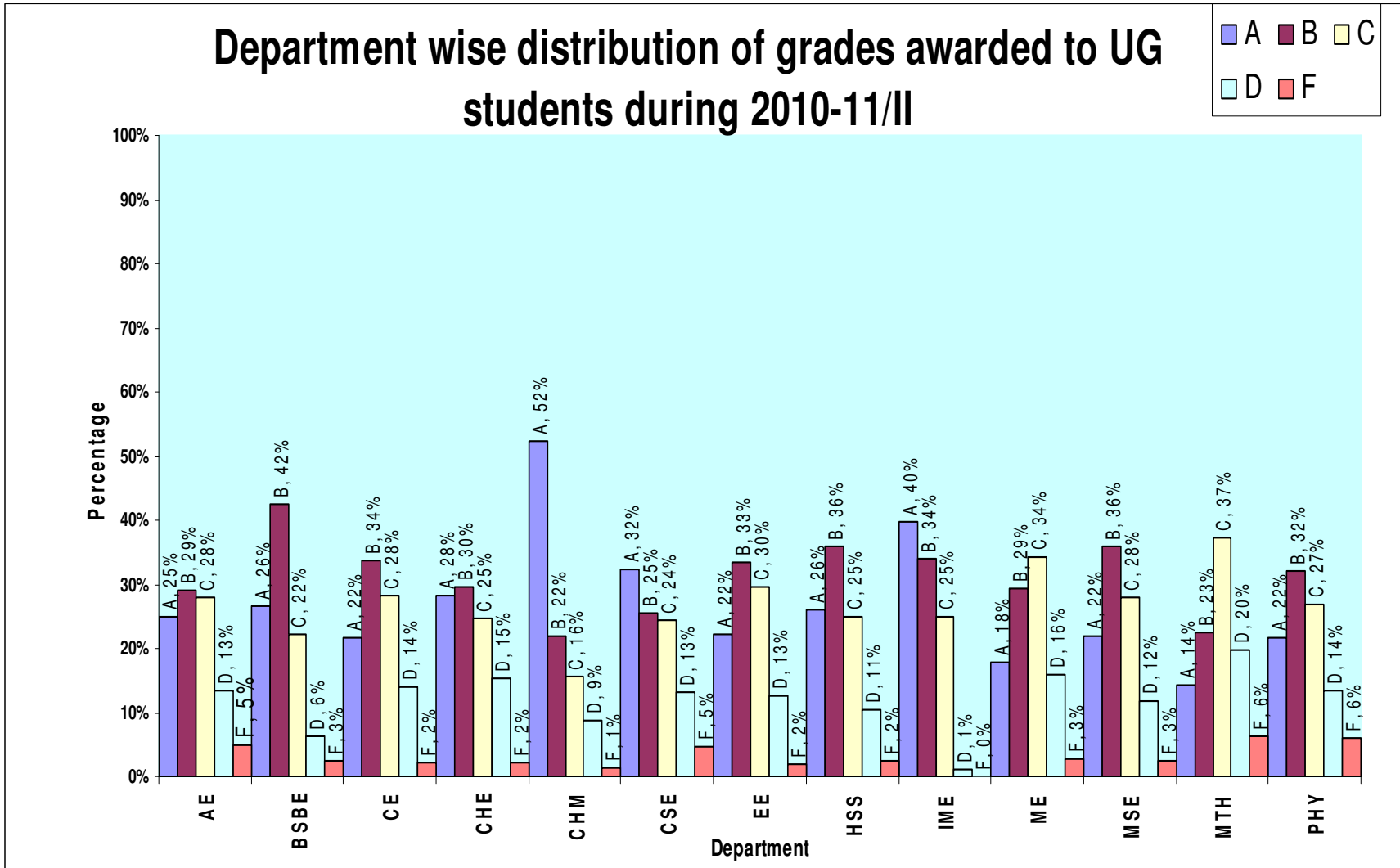


Figure 4

Department wise distribution of grades awarded to PG students during 2010-11/II

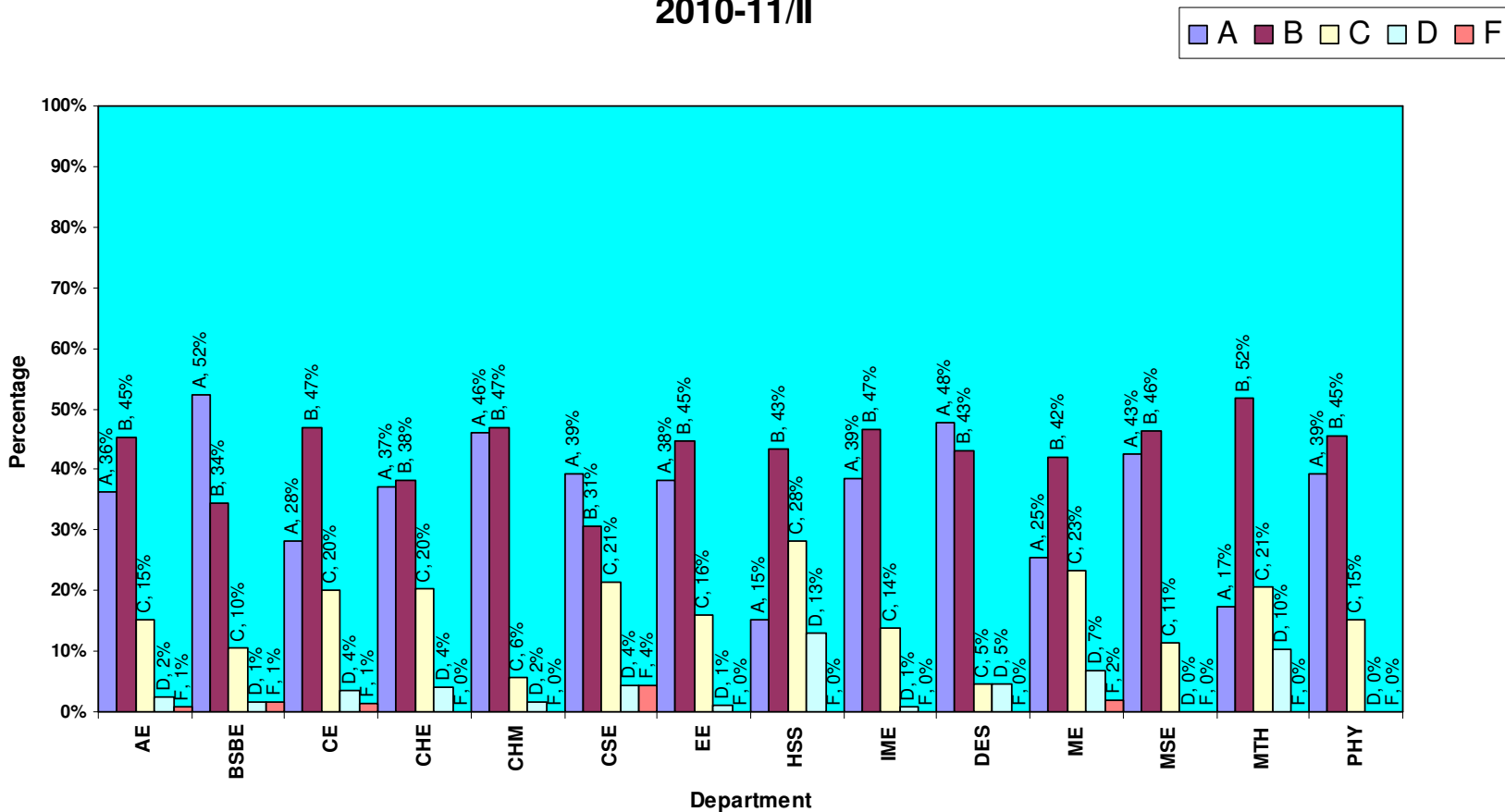


Figure 5:(In the entire institute only one 'E' grade was awarded)

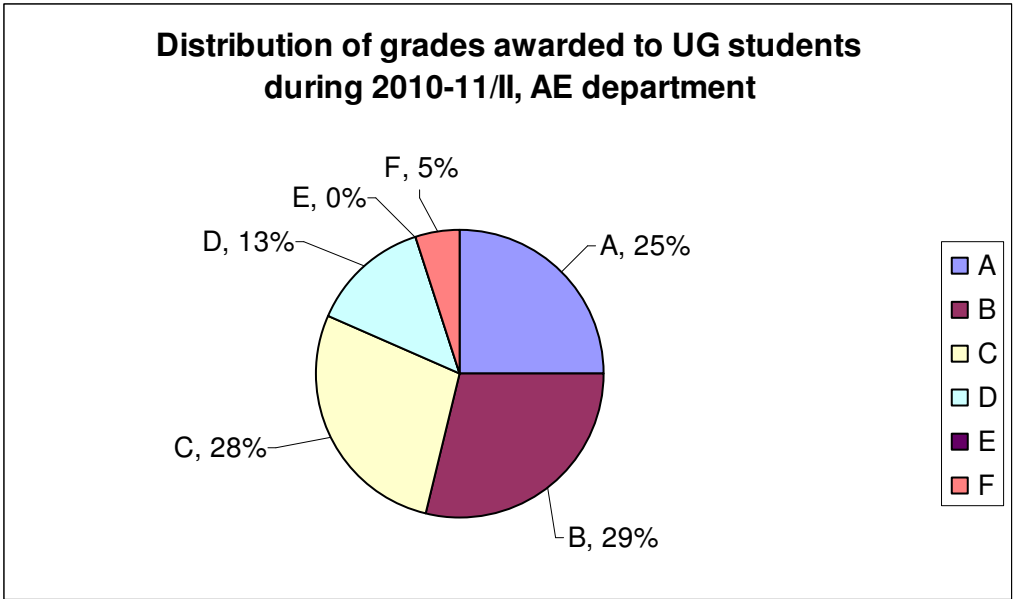


Figure 6

Data is for course numbers: AE211, AE232, AE312, AE322, AE332, AE342, AE422, AE462, AE472, AE615, AE618, AE629, AE648, AE65, AE675, ESO202

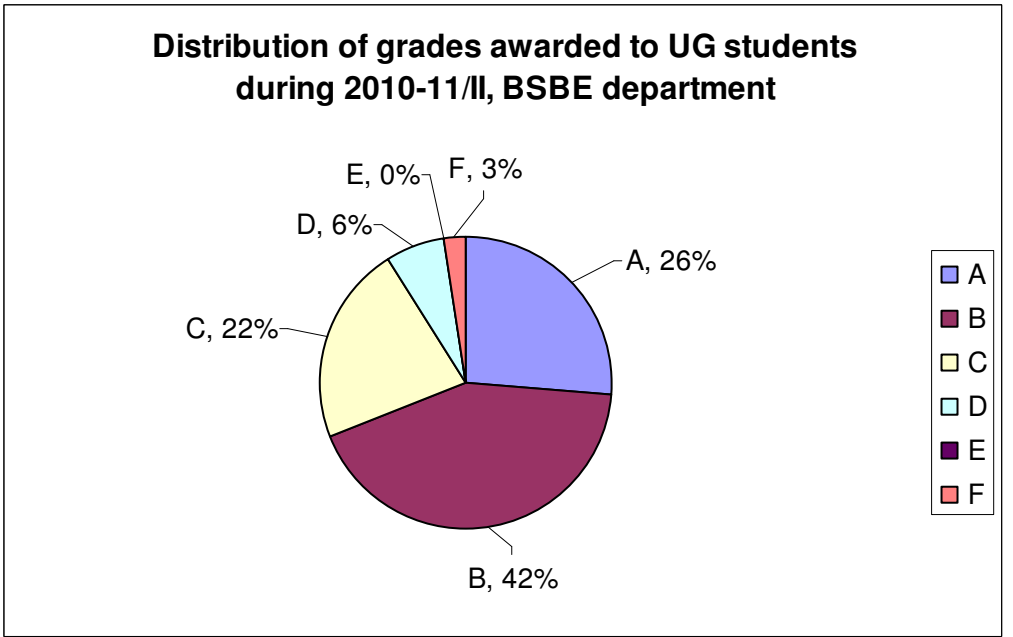


Figure 7

Data is for course numbers: BSE216, BSE292, BSE314, BSE392, BSE454, BSE498, BSE49, BSE631, BSE634, BSE636, BSE638, BSE653

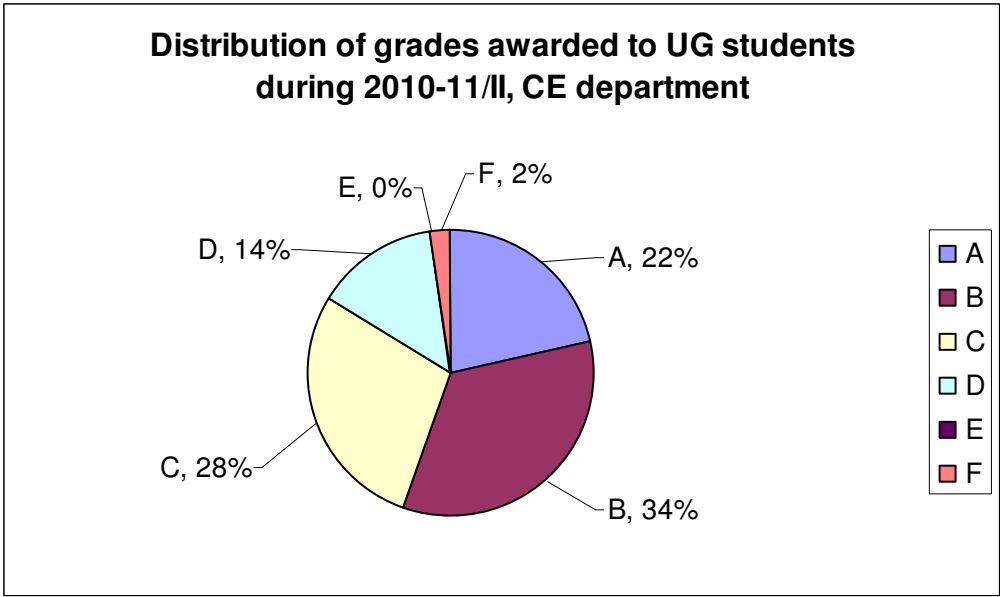


Figure 8

Data is for course numbers: CE222, CE242, CE312N, CE322, CE332, CE362, CE373, CE382, CE451, CE452, CE492, CE613, CE622N, CE627, CE629, CE632N, CE635, CE641, CE676, CE682N, EEM606, EEM609, ESO218, TA101N

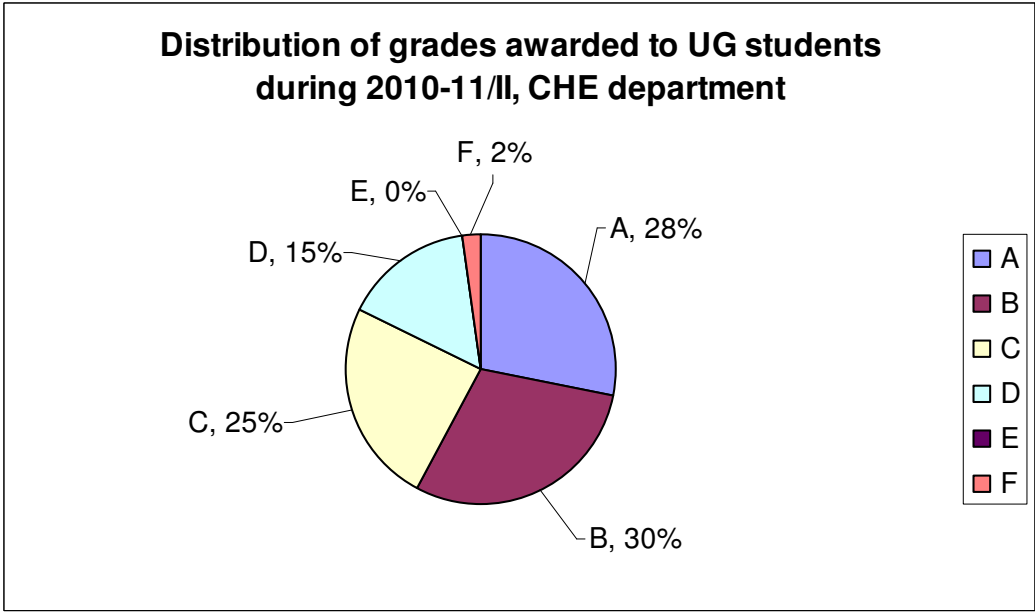


Figure 9

Data is for course numbers: CHE211, CHE221, CHE313, CHE362, CHE381, CHE391, CHE453, CHE463, CHE494, CHE496, CHE600, CHE612, CHE613, CHE617, CHE618, CHE622, CHE623, CHE631, CHE632, CHE679, CHE688, ESO212

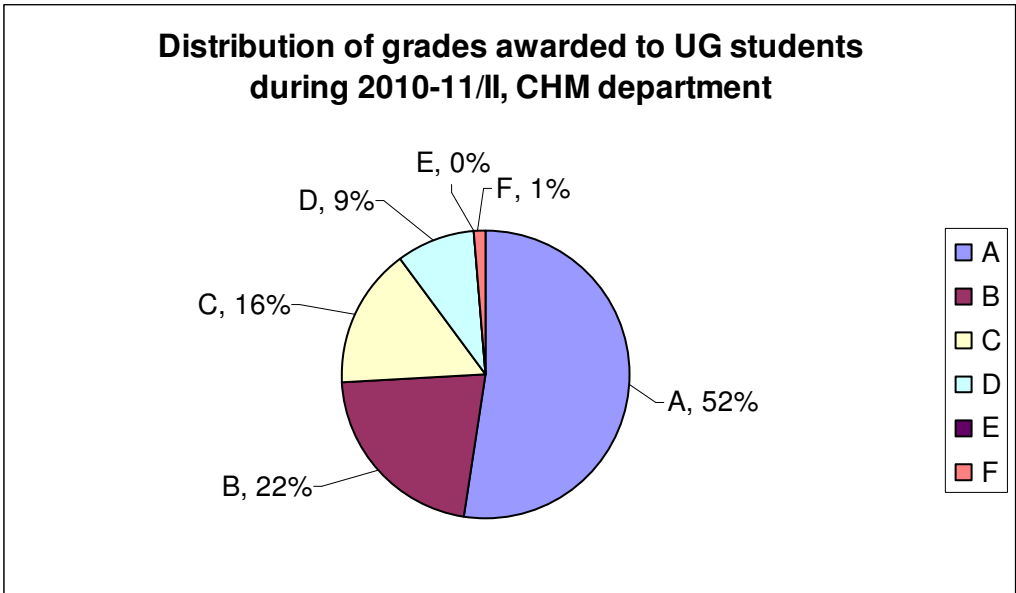


Figure 10

Data is for course numbers: CHM101N, CHM201R, CHM222, CHM302, CHM341, CHM343, CHM402, CHM404, CHM422, CHM442, CHM443, CHM481, CHM602, CHM611, CHM612, CHM631, CHM636, CHM637, CHM648, CHM684, CHM695, CHM700, SE331

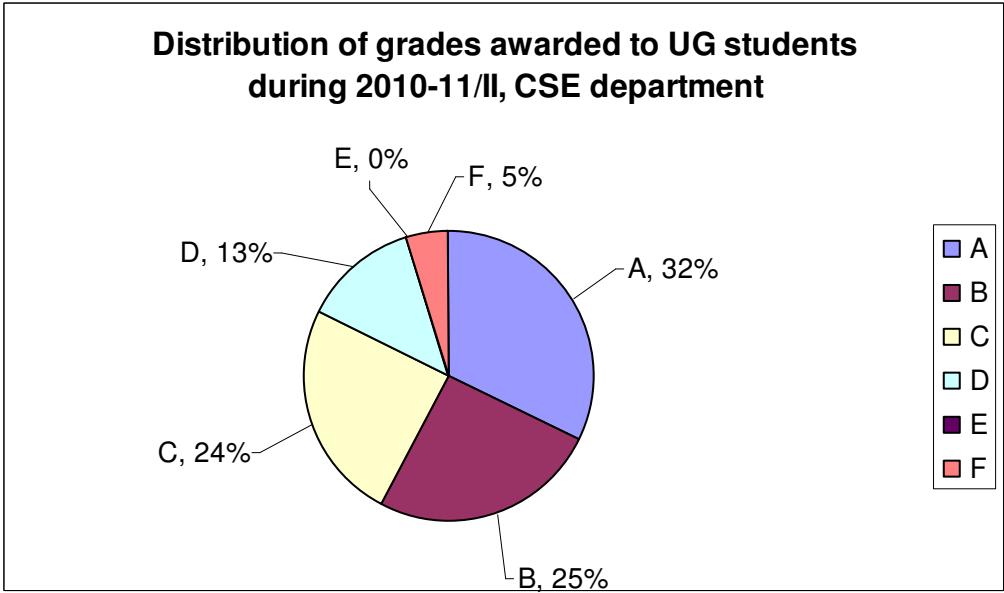


Figure 11

Data is for course numbers: CS201, CS315, CS335, CS345, CS355, CS365, CS397, CS422, CS497, CS498, CS499, CS624, CS625, CS639, CS640, CS644, CS645, CS646, CS654, CS674, CS676, CS681, CS720, ESC101N

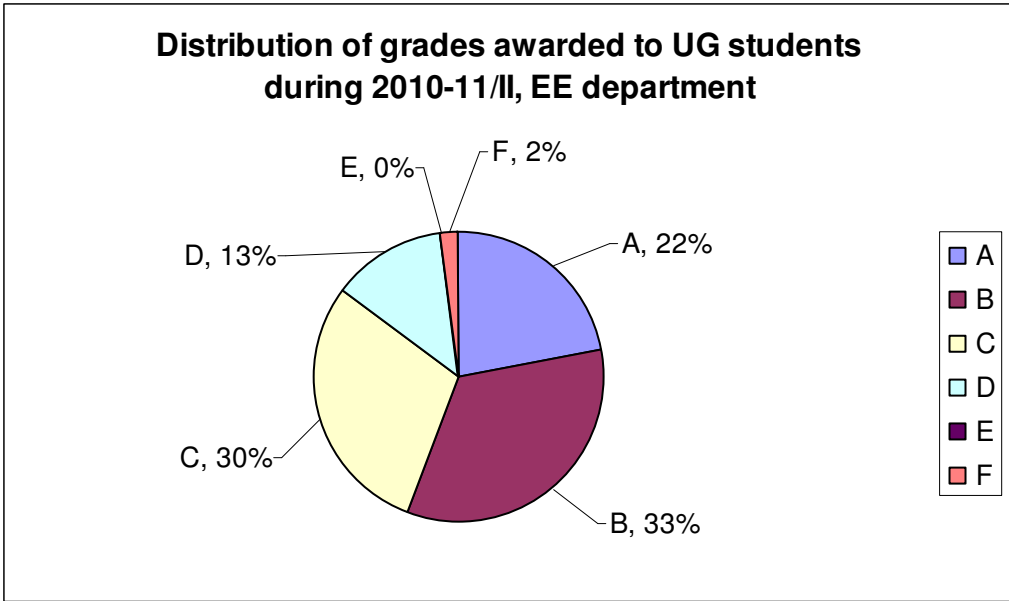


Figure 12

Data is for course numbers: EE210, EE250, EE301, EE311, EE321, EE340, EE360, EE381, EE491, EE492, EE602, EE611, EE619, EE623, EE633, EE640, EE642, EE646, EE648, EE649, EE662, EE665, EE670, EE671, EE698Z, ESC102N, ESO210

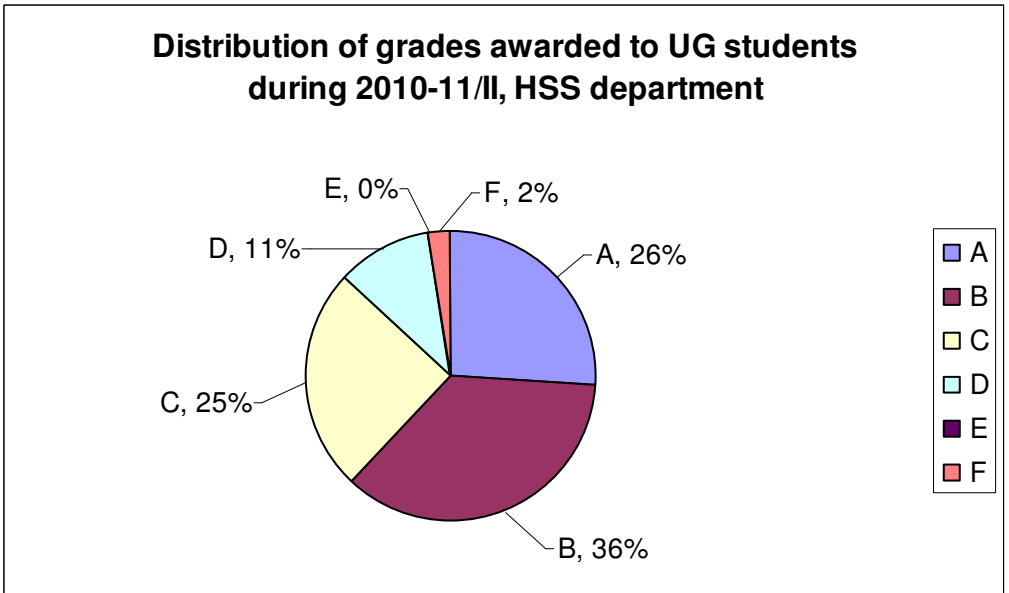


Figure 13

Data is for course numbers: ART102, ART105, ART402, ECO201, ECO231, ECO434, ECO745, ENG124, ENG434, ENG436, ENG437, ENG451, PHI141, PHI446, PHI450, PHI784, PSY151, PSY451, PSY454, PSY458, SOC171, SOC477, SOC479, SOC486, ECO202, ECO303, ECO312, ECO332, ECO405, ECO423, ECO424, ECO501, ECO598, ECO599, ECO753

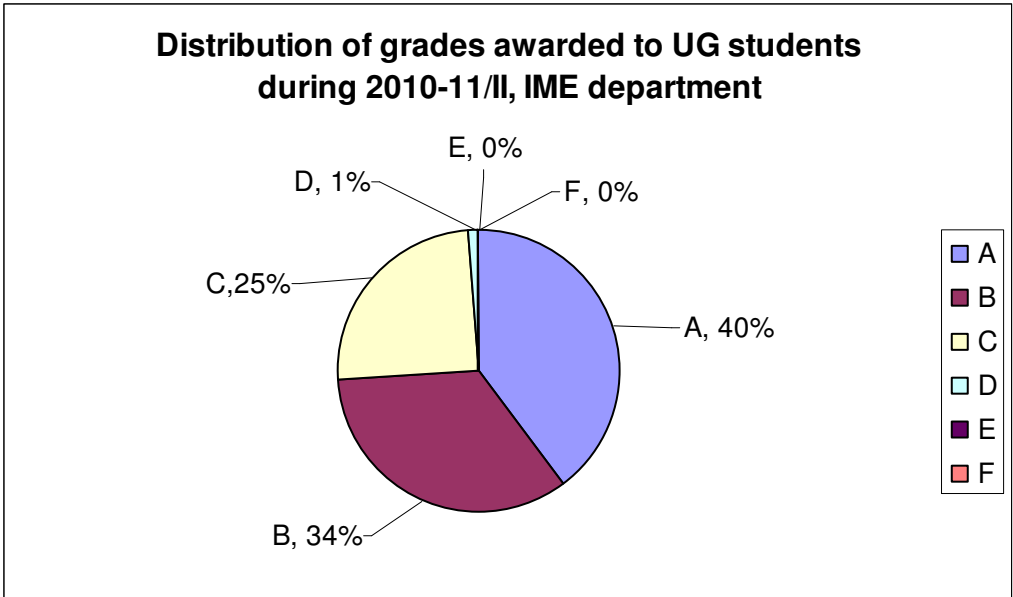


Figure 14

Data is for course numbers: IME624, IME671, MBA607, MBA616, MBA617, MBA624, MBA626, MBA628, MBA632, MBA633, MBA635, MBA645, MBA648, MBA665

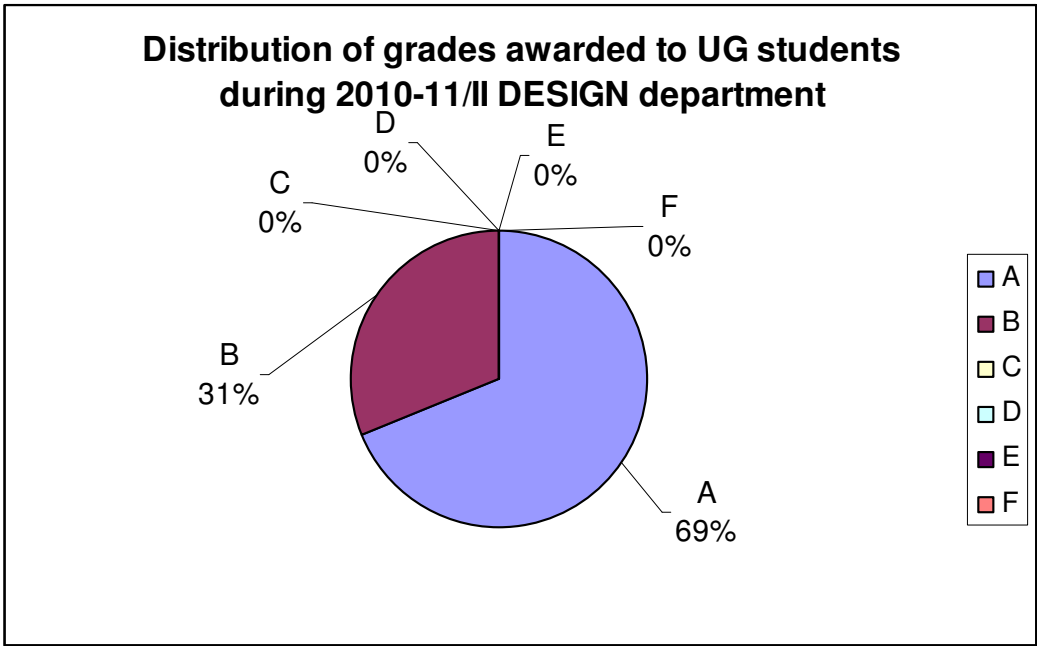


Figure 15

Data is for course numbers: DES624, DES698

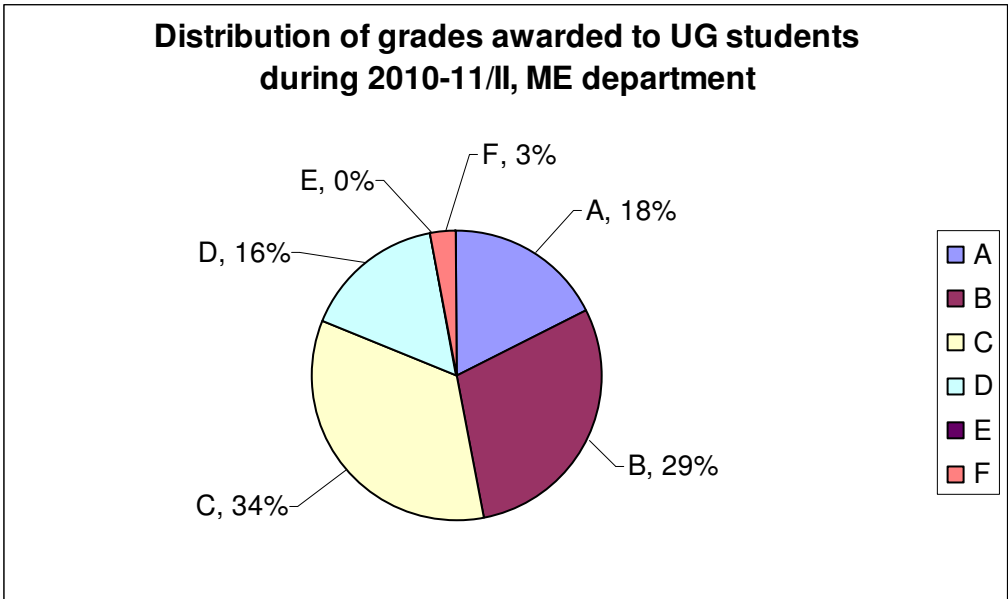


Figure 16

Data is for course numbers: ESO204, ME231, ME251, ME301, ME351, ME353, ME371, ME451, ME452, ME461, ME623, ME626, ME627, ME647, ME649, ME690, ME723, ME726, ME728, ME742, ME743, ME751, ME752, ME763, NT642, TA201N, NT651

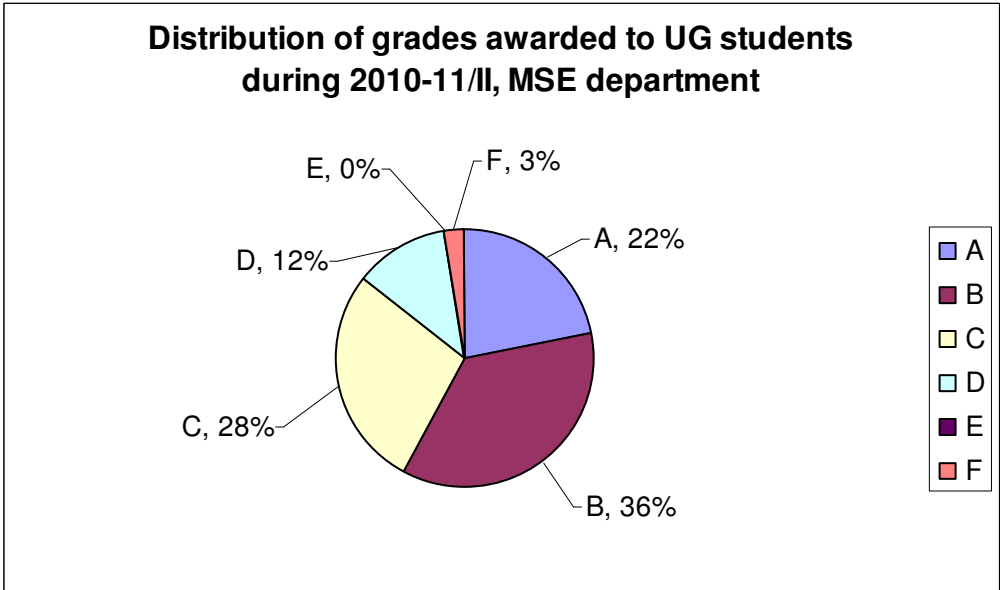


Figure 17

Data is for course numbers: MSE601, MSE630, MSE646, MSE648, MSE655, MSE666, MSE668, MSE670, MSE681, MSE689, MSE693, ESO214, MME210, MME250, MME331, MME340, MME350, MME370, MME480, MME482, MME498, MME499

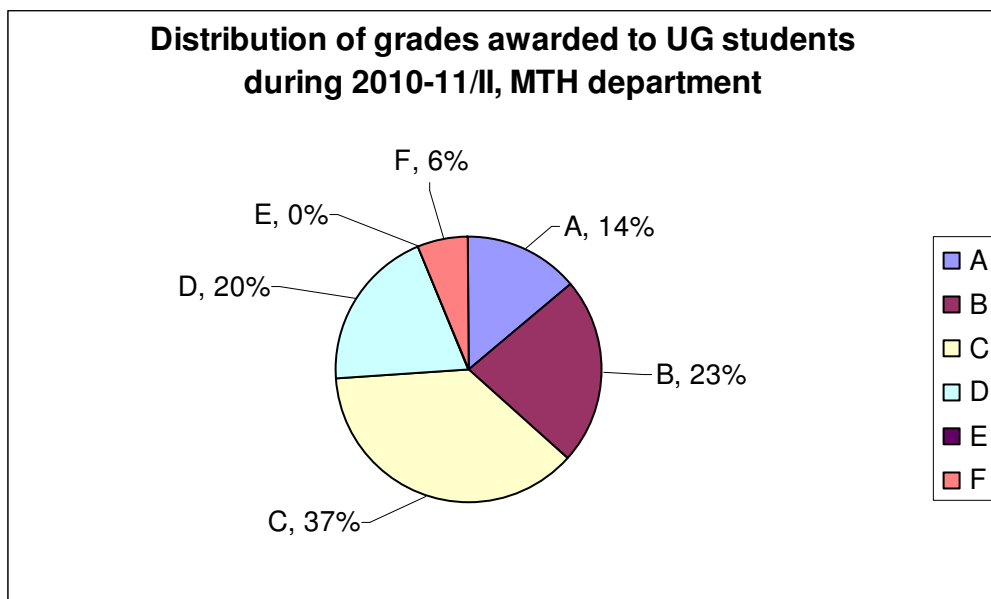


Figure 18

Data is for course numbers: ESO209, MTH101R, MTH101S, MTH102N, MTH202, MTH203R, MTH204, MTH302, MTH304, MTH306, MTH308, MTH404, MTH411, MTH412, MTH416, MTH418, MTH424, MTH511, MTH514, MTH516, MTH524, MTH598, MTH599, MTH603, MTH606, MTH637, MTH648, MTH653, MTH677, MTH681., MTH693, MTH694, MTH733, SE359

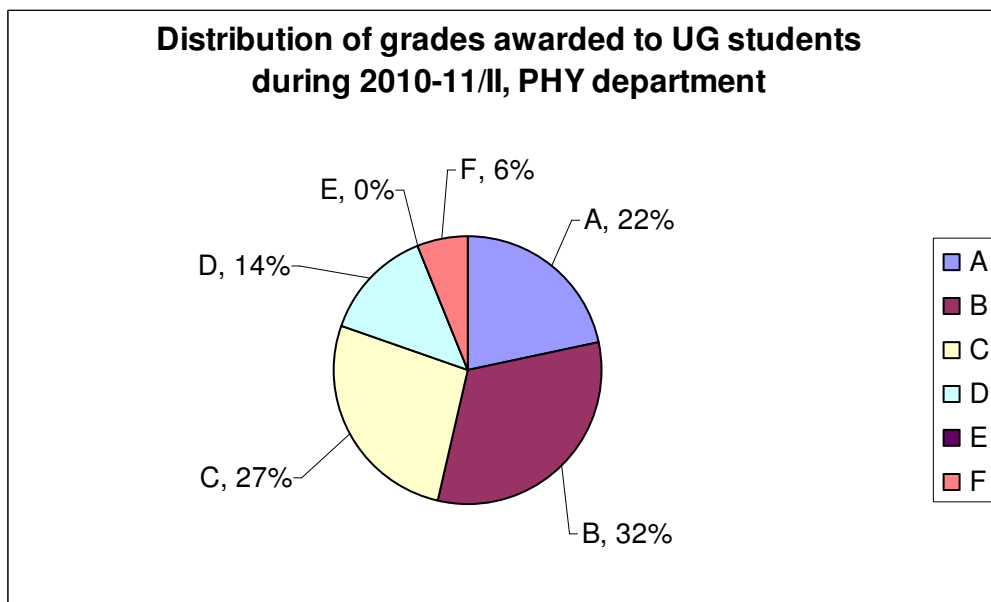


Figure 19

Data is for course numbers: PHY101N, PHY102N, PHY102S, PHY103N, PHY204, PHY210, PHY218, PHY412, PHY422, PHY432, PHY461, PHY462, PHY473, PHY500, PHY502N, PHY524, PHY553, PHY566, PHY568, PHY570, PHY571, PHY590, PHY610, PHY612, PHY616, PHY617, PHY660, PHY680, PHY690C, PHY690R, PHY690T, SE301, SE309, SE321

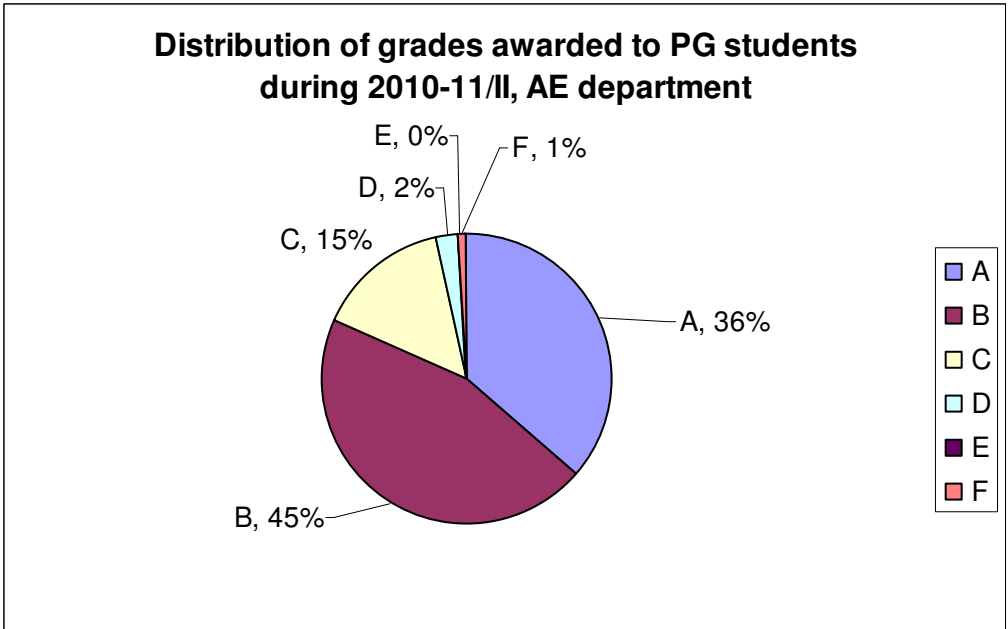


Figure 20

Data is for course numbers: AE342, AE422, AE462, AE612, AE615, AE618, AE621, AE629, AE648, AE653, AE675, AE678, AE681, AE685, AE687

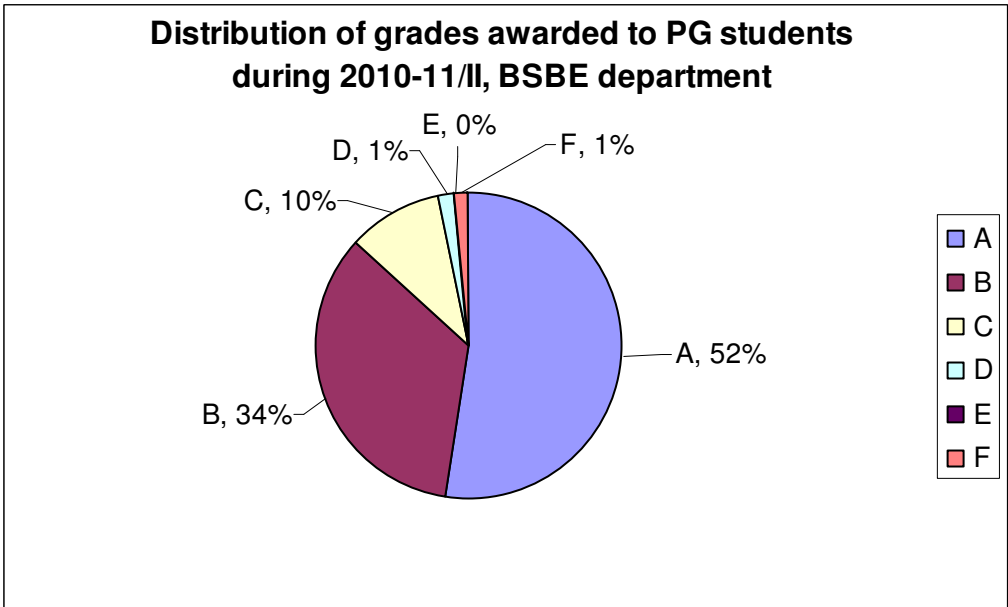


Figure 21

Data is for course numbers: BSE631, BSE633, BSE634, BSE636, BSE638, BSE641, BSE652, BSE653, BSE671, BSE681

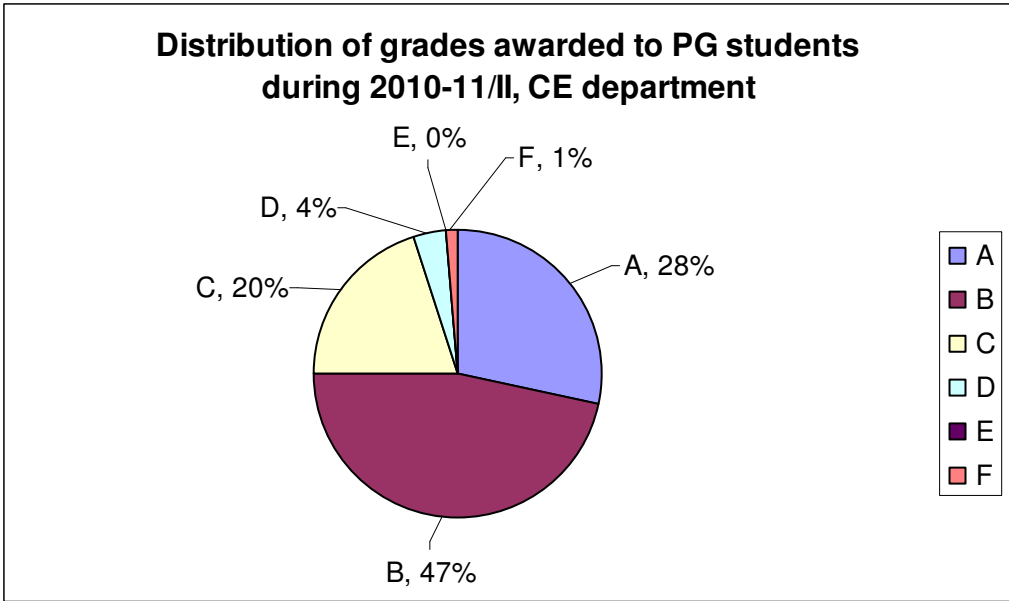


Figure 22

Data is for course numbers: CE362, CE612, CE613, CE622N, CE627, CE629, CE632N, CE634N, CE635, CE641, CE647, CE648, CE672, CE673N, CE676, CE682N, CE690, CE717, EEM604, EEM606, EEM609, EEM701

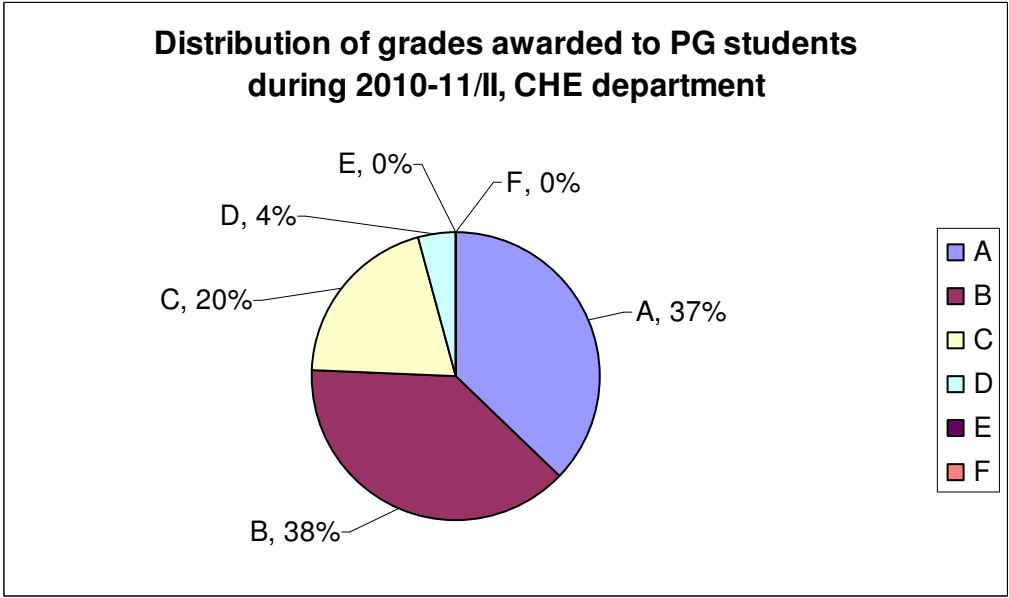


Figure 23

Data is for course numbers: CHE453, CHE463, CHE600, CHE612, CHE613, CHE617, CHE618, CHE622, CHE623, CHE631, CHE632, CHE641, CHE679, CHE688

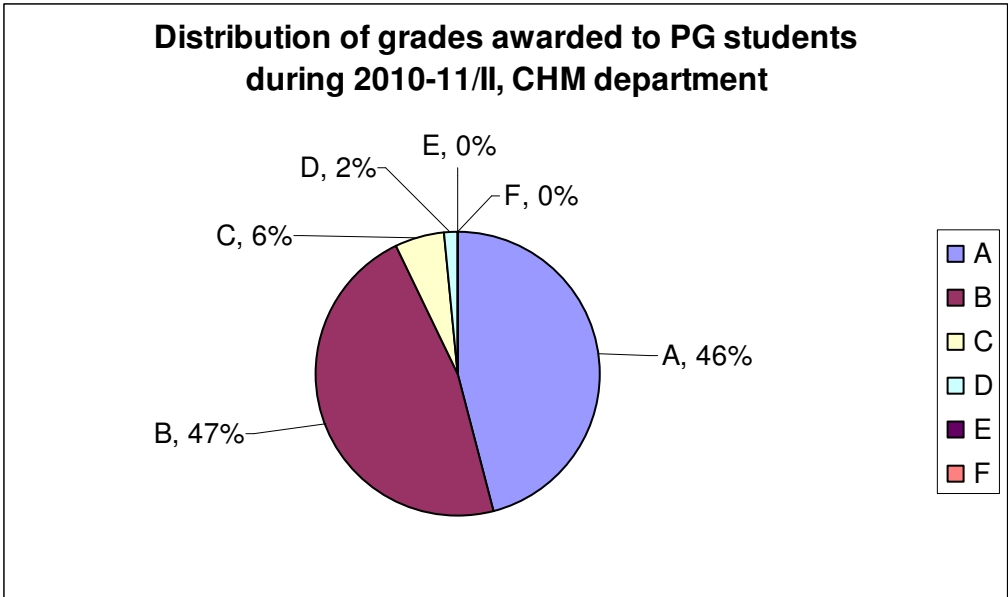


Figure 24

Data is for course numbers: CHM442, CHM602, CHM612, CHM631, CHM636, CHM637, CHM648, CHM684, CHM695

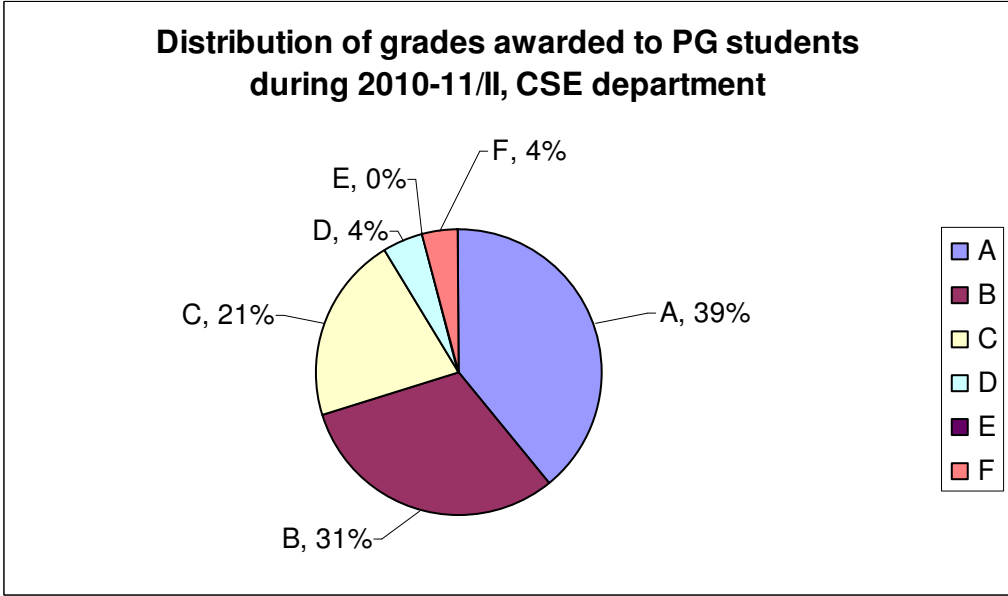


Figure 25

Data is for course numbers: CS624, CS625, CS639, CS640, CS644, CS645, CS646, CS654, CS674, CS676, CS681, CS697, CS797

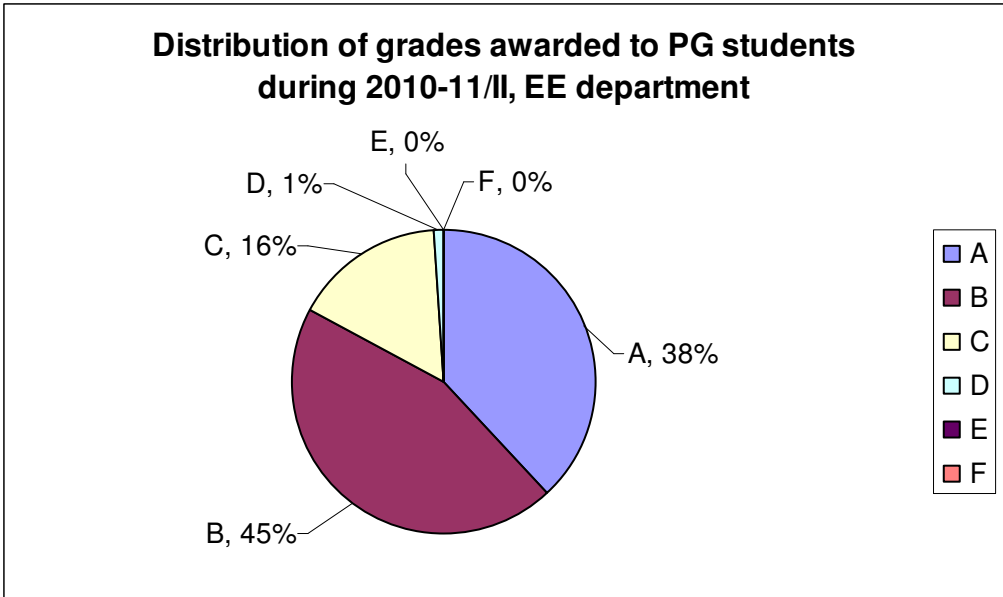


Figure 26

Data is for course numbers: EE600, EE602, EE608, EE611, EE618, EE619, EE622, EE623, EE631, EE633, EE640, EE642, EE643, EE644, EE646, EE648, EE649, EE662, EE665, EE670, EE671, EE698V, EE698Z, LT680

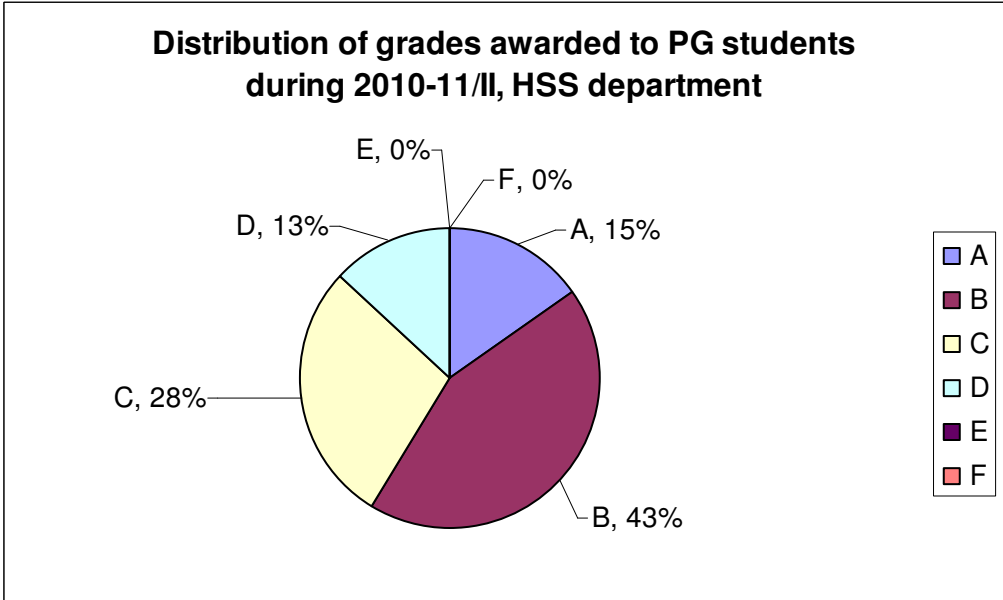


Figure 27

Data is for course numbers: ECO231, ECO735, ECO737, ECO745, ENG437, ENG451, PSY454, PSY775, PSY783, PSY784, PSY787, SOC477, SOC479, SOC486, ECO753

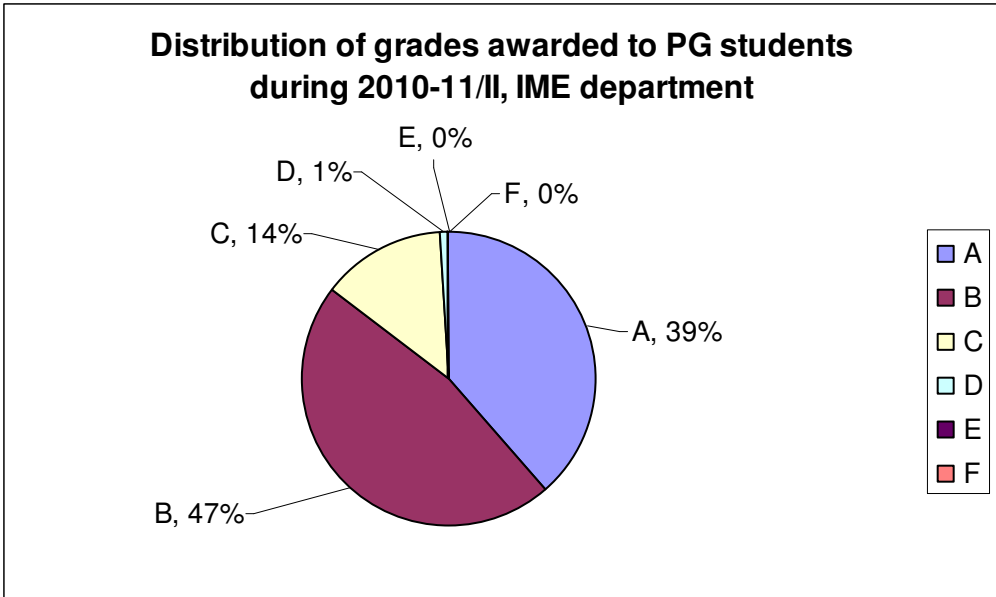


Figure 28

Data is for course numbers: IME624, IME625, IME641, IME642, IME671, MBA607, MBA616, MBA617, MBA621, MBA624, MBA626, MBA628, MBA632, MBA633, MBA635,, MBA645, MBA648, MBA661, MBA665, MBA671, MBA677, MBA699A

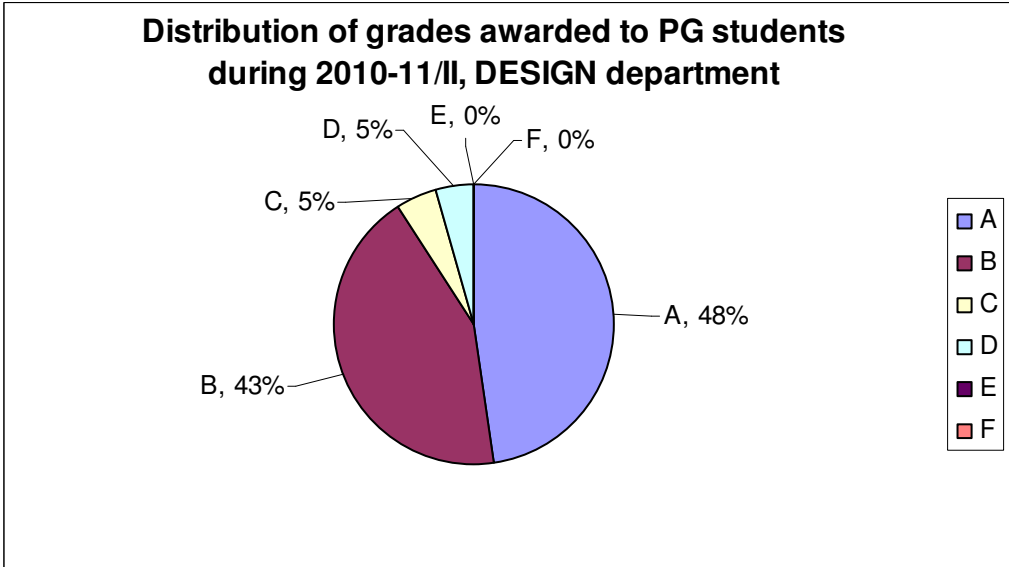


Figure 29

Data is for course numbers: DES603, DES624, DES682, DES698

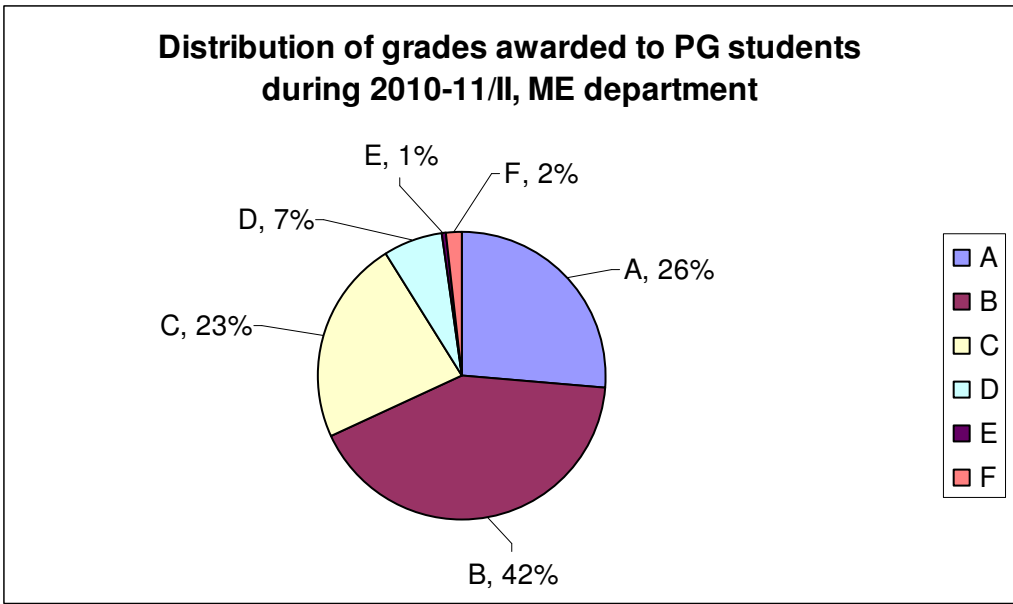


Figure 30

Data is for course numbers: ME461, ME617, ME622, ME623, ME626, ME627, ME642, ME647, ME649, ME690, ME698J, ME698K, ME698L, ME721, ME723, ME726, ME728, ME742, ME743, ME751, ME752, ME761, ME763, ME770, ME779, NT642, NT614, NT621, NT651, LT611

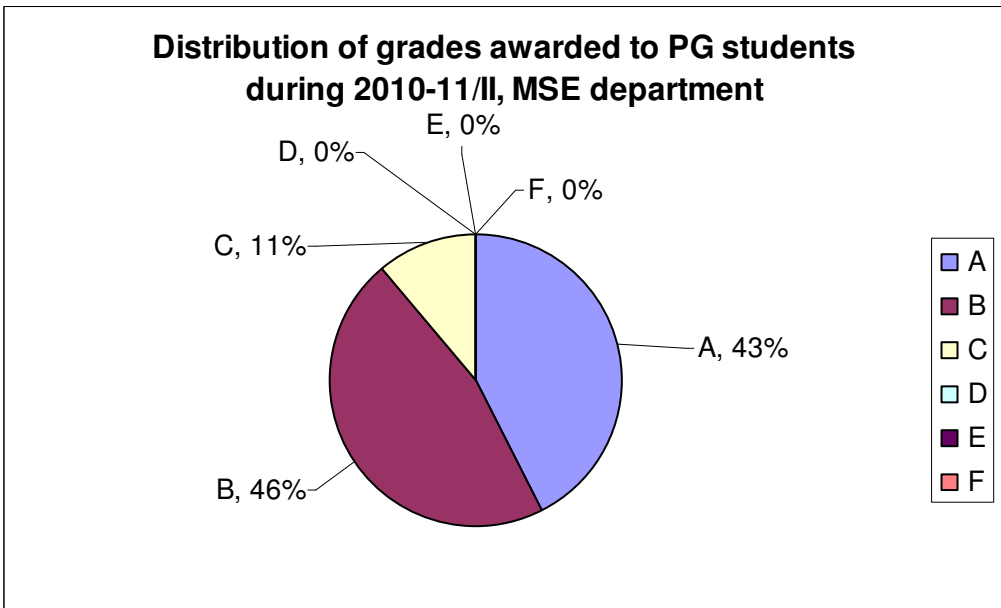


Figure 31

Data is for course numbers: MSE601, MSE630, MSE646, MSE648, MSE655, MSE666, MSE668, MSE670, MSE681, MSE689, MSE693

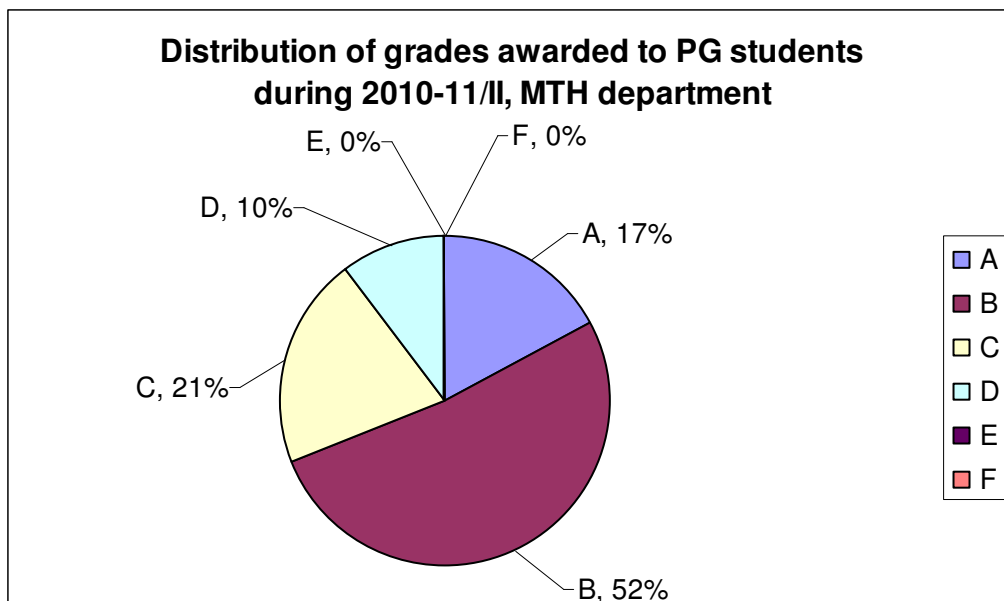


Figure 32

Data is for course numbers: MTH603, MTH606, MTH637, MTH648, MTH677, MTH693, MTH733, MTH751, MTH752

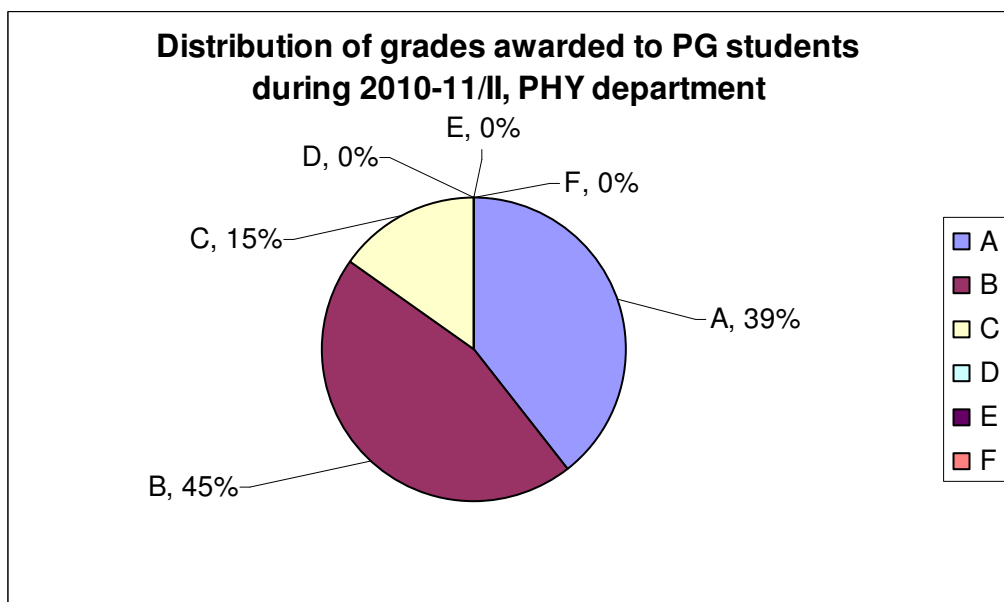


Figure 33

Data is for course numbers: PHY422, PHY599, PHY602, PHY604, PHY610, PHY612, PHY616, PHY617, PHY660, PHY680, PHY690C, PHY690R, PHY690T

Annexure – 1

Average grade awarded to students across the Institute in 2010-11/II

Category of Students	% of Students with different grades						Average Grade (out of 10.0)
	A	B	C	D	E	F	
All, UG students (including core courses)	25	30	28	14	0	4	7.2
UG students, in Core courses only	21	29	32	14	0	4	7.0
All PG Students	35	44	17	3	0	1	8.2